

For Research Use Only

SLC4A1 Monoclonal antibody, PBS Only (Detector)

Catalog Number: 66984-3-PBS



Basic Information

Catalog Number: 66984-3-PBS	GenBank Accession Number: BC101570	Purification Method: Protein A Magarose purification
Size: 100ug, Concentration: 1 mg/ml by Nanodrop;	GeneID (NCBI): 6521	CloneNo.: 1C2H1
Source: Mouse	UNIPROT ID: P02730	
Isotype: IgG3	Full Name: solute carrier family 4, anion exchanger, member 1 (erythrocyte membrane protein band 3, Diego blood group)	
Immunogen Catalog Number: AG28058	Calculated MW: 911 aa, 102 kDa	

Applications

Tested Applications:
Cytometric bead array, Indirect ELISA

Species Specificity:
human

Product Information

66984-3-PBS targets SLC4A1 as part of a matched antibody pair:

MP50547-1: 66984-2-PBS capture and 66984-3-PBS detection (validated in Cytometric bead array)

MP50547-3: 66984-4-PBS capture and 66984-3-PBS detection (validated in Cytometric bead array)

Unconjugated mouse monoclonal antibody pair in PBS only (BSA and azide free) storage buffer at a concentration of 1 mg/mL, ready for conjugation.

This conjugation ready format makes antibodies ideal for use in many applications including: ELISAs, multiplex assays requiring matched pairs, mass cytometry, and multiplex imaging applications. Antibody use should be optimized by the end user for each application and assay.

Storage

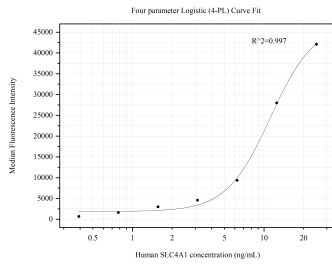
Storage:
Store at -80°C.

Storage Buffer:
PBS Only

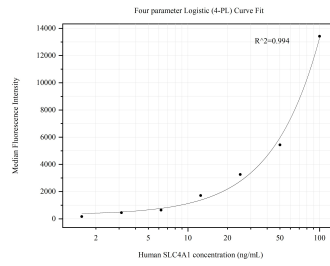
For technical support and original validation data for this product please contact:
T: 1 (888) 4PTGLAB (1-888-478-4522) (toll free in USA), or 1(312) 455-8498 (outside USA) E: proteintech@ptglab.com
W: ptglab.com

This product is exclusively available under Proteintech Group brand and is not available to purchase from any other manufacturer.

Selected Validation Data



Cytometric bead array standard curve of MP50547-1, SLC4A1 Monoclonal Matched Antibody Pair, PBS Only. Capture antibody: 66984-2-PBS. Detection antibody: 66984-3-PBS. Standard: Ag28058. Range: 0.391-25 ng/mL



Cytometric bead array standard curve of MP50547-3, SLC4A1 Monoclonal Matched Antibody Pair, PBS Only. Capture antibody: 66984-4-PBS. Detection antibody: 66984-3-PBS. Standard: Ag28058. Range: 1.563-100 ng/mL