

For Research Use Only

PREB Monoclonal antibody, PBS Only



Catalog Number: 66981-1-PBS

Basic Information

Catalog Number: 66981-1-PBS	GenBank Accession Number: BC002765	Purification Method: Protein A purification
Size: 100ug , Concentration: 1 mg/ml by Nanodrop;	GeneID (NCBI): 10113	CloneNo.: 2F6A1
Source: Mouse	UNIPROT ID: Q9HCU5	
Isotype: IgG1	Full Name: prolactin regulatory element binding	
Immunogen Catalog Number: AG28549	Calculated MW: 45 kDa	
	Observed MW: 45 kDa	

Applications

Tested Applications:
WB, IHC, Indirect ELISA

Species Specificity:
Human

Background Information

PREB contains two PQ-rich potential transactivation domains, but no apparent DNA-binding motif, and exhibits sequence-specific binding to Pit1-binding element of the prolactin (PRL) promoter. It may act as a transcriptional regulator and is thought to be involved in some of the developmental abnormalities observed in patients with partial trisomy 2p.

Storage

Storage:
Store at -80°C.

Storage Buffer:
PBS Only

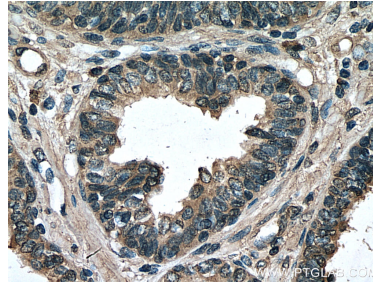
For technical support and original validation data for this product please contact:
T: 1 (888) 4PTGLAB (1-888-478-4522) (toll free in USA), or 1(312) 455-8498 (outside USA) E: proteintech@ptglab.com
W: ptglab.com

This product is exclusively available under Proteintech Group brand and is not available to purchase from any other manufacturer.

Selected Validation Data



Daudi cells were subjected to SDS PAGE followed by western blot with 66981-1-Ig (PREB antibody) at dilution of 1:3000 incubated at room temperature for 1.5 hours. This data was developed using the same antibody clone with 66981-1-PBS in a different storage buffer formulation.



Immunohistochemical analysis of paraffin-embedded human prostate cancer tissue slide using 66981-1-Ig (PREB antibody) at dilution of 1:300 (under 40x lens). Heat mediated antigen retrieval with Tris-EDTA buffer (pH 9.0). This data was developed using the same antibody clone with 66981-1-PBS in a different storage buffer formulation.