

For Research Use Only

# CUL1 Monoclonal antibody, PBS Only



Catalog Number: 66978-1-PBS

## Basic Information

<b>Catalog Number:</b> 66978-1-PBS	<b>GenBank Accession Number:</b> BC034318	<b>Purification Method:</b> Protein A purification
<b>Size:</b> 100ug, Concentration: 1mg/ml by Nanodrop;	<b>GeneID (NCBI):</b> 8454	<b>CloneNo.:</b> 1B6D10
<b>Source:</b> Mouse	<b>UNIPROT ID:</b> Q13616	
<b>Isotype:</b> IgG2b	<b>Full Name:</b> cullin 1	
<b>Immunogen Catalog Number:</b> AG28399	<b>Calculated MW:</b> 90 kDa	
	<b>Observed MW:</b> 85 kDa	

## Applications

**Tested Applications:**  
Indirect ELISA, IF/ICC, IHC, WB

**Species Specificity:**  
rat, mouse, human

## Background Information

The cullin family proteins are scaffold proteins for the Ring finger type E3 ligases. Humans express seven cullin proteins: CUL1-3, CUL4A, CUL4B, CUL5, and CUL7. Each cullin protein can form an E3 ligase similar to the prototype Ring-type E3 ligase Skp1-CUL1-F-box complex. The Cullin-RING-finger type E3 ligases are important regulators in early embryonic development, as highlighted by genetic studies demonstrating that knock-out of CUL1, CUL3, or CUL4A in mice results in early embryonic lethality.

## Storage

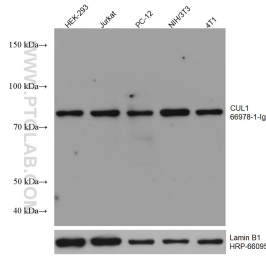
**Storage:**  
Store at -80°C.

**Storage Buffer:**  
PBS Only

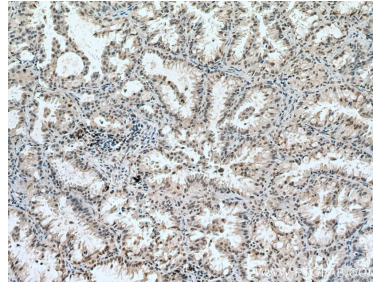
For technical support and original validation data for this product please contact:  
T: 1 (888) 4PTGLAB (1-888-478-4522) (toll free in USA), or 1(312) 455-8498 (outside USA)      E: proteintech@ptglab.com  
W: ptglab.com

**This product is exclusively available under Proteintech Group brand and is not available to purchase from any other manufacturer.**

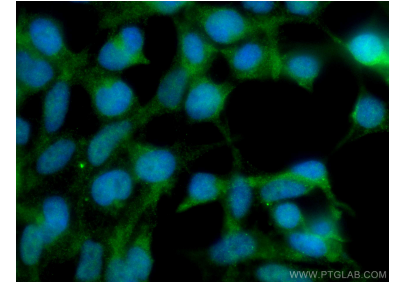
## Selected Validation Data



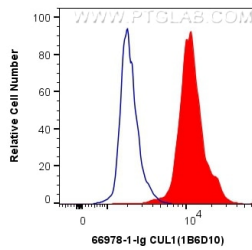
Various lysates were subjected to SDS PAGE followed by western blot with 66978-1-Ig (CUL1 antibody) at dilution of 1:5000 incubated at room temperature for 1.5 hours. The membrane was stripped and reblotted with HRP-conjugated Lamin B1 Monoclonal antibody (HRP-66095) as loading control. This data was developed using the same antibody clone with 66978-1-PBS in a different storage buffer formulation.



Immunohistochemical analysis of paraffin-embedded human lung cancer tissue slide using 66978-1-Ig (CUL1 antibody) at dilution of 1:1000 (under 10x lens). Heat mediated antigen retrieval with Tris-EDTA buffer (pH 9.0). This data was developed using the same antibody clone with 66978-1-PBS in a different storage buffer formulation.



Immunofluorescent analysis of (4% PFA) fixed HEK-293 cells using CUL1 antibody (66978-1-Ig, Clone: 1B6D10) at dilution of 1:400 and CoraLite@488-Conjugated AffiniPure Goat Anti-Mouse IgG(H+L). This data was developed using the same antibody clone with 66978-1-PBS in a different storage buffer formulation.



1X10<sup>6</sup> HEK-293 cells were intracellularly stained with 0.4 ug Anti-Human CUL1 (66978-1-Ig, Clone:1B6D10) and CoraLite@488-Conjugated AffiniPure Goat Anti-Mouse IgG(H+L) at dilution 1:1000 (red), or 0.4 ug Mouse IgG2b Isotype Control (66360-3-Ig, Clone: K11B8C4B5) (blue). Cells were fixed with 4% PFA and permeabilized with Flow Cytometry Perm Buffer (PF00011-C). This data was developed using the same antibody clone with 66978-1-PBS in a different storage buffer