

For Research Use Only

CUL1 Monoclonal antibody

Catalog Number: 66978-1-Ig



Basic Information

Catalog Number: 66978-1-Ig	GenBank Accession Number: BC034318	Purification Method: Protein A purification
Size: 150ul , Concentration: 2700 ug/ml by Nanodrop and 1000 ug/ml by Bradford method using BSA as the standard;	GeneID (NCBI): 8454	CloneNo.: 1B6D10
Source: Mouse	UNIPROT ID: Q13616	Recommended Dilutions: WB 1:2000-1:10000 IHC 1:500-1:2000 IF/ICC 1:200-1:800
Isotype: IgG2b	Full Name: cullin 1	
Immunogen Catalog Number: AG28399	Calculated MW: 90 kDa	
	Observed MW: 85 kDa	

Applications

Tested Applications: WB, IHC, IF/ICC, FC (Intra), ELISA	Positive Controls: WB : HEK-293 cells, NCI-H1299 cells, Jurkat cells, PC-12 cells, NIH/3T3 cells, 4T1 cells IHC : human lung cancer tissue, human prostate cancer tissue IF/ICC : HEK-293 cells,
Species Specificity: human, mouse, rat	
Note-IHC: suggested antigen retrieval with TE buffer pH 9.0; (*) Alternatively, antigen retrieval may be performed with citrate buffer pH 6.0	

Background Information

The cullin family proteins are scaffold proteins for the Ring finger type E3 ligases. Humans express seven cullin proteins: CUL1-3, CUL4A, CUL4B, CUL5, and CUL7. Each cullin protein can form an E3 ligase similar to the prototype Ring-type E3 ligase Skp1-CUL1-F-box complex. The Cullin-RING-finger type E3 ligases are important regulators in early embryonic development, as highlighted by genetic studies demonstrating that knock-out of CUL1, CUL3, or CUL4A in mice results in early embryonic lethality.

Storage

Storage:
Store at -20°C. Stable for one year after shipment.
Storage Buffer:
PBS with 0.02% sodium azide and 50% glycerol pH 7.3.
Aliquoting is unnecessary for -20°C storage

*** 20ul sizes contain 0.1% BSA

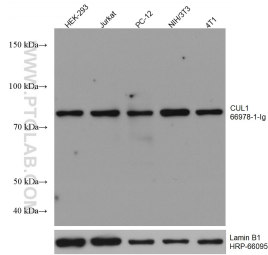
For technical support and original validation data for this product please contact:

T: 1 (888) 4PTGLAB (1-888-478-4522) (toll free in USA), or 1(312) 455-8498 (outside USA)

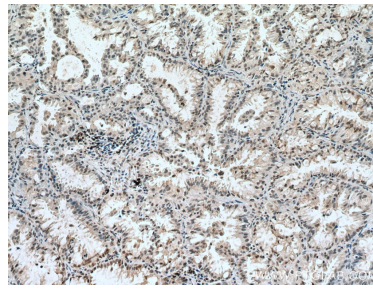
E: proteintech@ptglab.com
W: ptglab.com

This product is exclusively available under Proteintech Group brand and is not available to purchase from any other manufacturer.

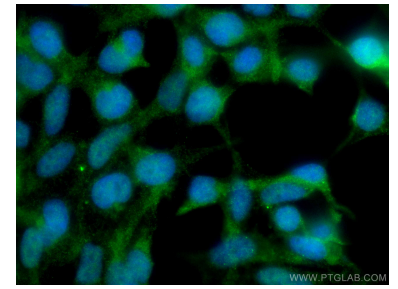
Selected Validation Data



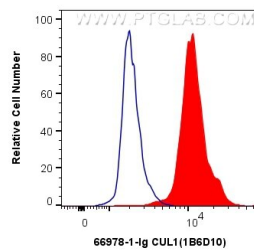
Various lysates were subjected to SDS PAGE followed by western blot with 66978-1-Ig (CUL1 antibody) at dilution of 1:5000 incubated at room temperature for 1.5 hours. The membrane was stripped and reblotted with HRP-conjugated Lamin B1 Monoclonal antibody (HRP-66095) as loading control.



Immunohistochemical analysis of paraffin-embedded human lung cancer tissue slide using 66978-1-Ig (CUL1 antibody) at dilution of 1:1000 (under 10x lens). Heat mediated antigen retrieval with Tris-EDTA buffer (pH 9.0).



Immunofluorescent analysis of (4% PFA) fixed HEK-293 cells using CUL1 antibody (66978-1-Ig, Clone: 1B6D10) at dilution of 1:400 and CoraLite® 488-Conjugated Goat Anti-Mouse IgG(H+L).



1X10⁶ HEK-293 cells were intracellularly stained with 0.4 ug Anti-Human CUL1 (66978-1-Ig, Clone:1B6D10) and CoraLite® 488-Conjugated Goat Anti-Mouse IgG(H+L) at dilution 1:1000 (red), or 0.4 ug Mouse IgG2b Isotype Control (66360-3-Ig, Clone: K11B8C4B5) (blue). Cells were fixed with 4% PFA and permeabilized with Flow Cytometry Perm Buffer (PF00011-C).