

For Research Use Only

GPR116 Monoclonal antibody, PBS Only

Catalog Number: 66967-2-PBS



Basic Information

Catalog Number: 66967-2-PBS	GenBank Accession Number: BC066121	Purification Method: Protein A purification
Size: 100ug , Concentration: 1 mg/ml by Nanodrop;	GeneID (NCBI): 221395	CloneNo.: 1H1B2
Source: Mouse	UNIPROT ID: Q8IZF2	
Isotype: IgG2b	Full Name: G protein-coupled receptor 116	
Immunogen Catalog Number: AG5820	Calculated MW: 1346 aa, 149 kDa	
	Observed MW: 150 kDa	

Applications

Tested Applications:
WB, Indirect ELISA

Species Specificity:
human

Background Information

GPR116 (ADGRF5, adhesion G protein-coupled receptor F5) is involved in the G protein-coupled receptor signaling pathway and cell surface receptor signaling pathway. may act upstream of or within several processes, including glomerular filtration; pharyngeal arch artery morphogenesis; and surfactant homeostasis.

Storage

Storage:
Store at -80°C.

Storage Buffer:
PBS Only

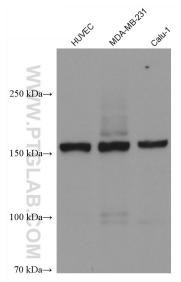
For technical support and original validation data for this product please contact:

T: 1 (888) 4PTGLAB (1-888-478-4522) (toll free
in USA), or 1(312) 455-8498 (outside USA)

E: proteintech@ptglab.com
W: ptglab.com

This product is exclusively available under Proteintech Group brand and is not available to purchase from any other manufacturer.

Selected Validation Data



Various lysates were subjected to SDS PAGE followed by western blot with 66967-2-Ig (GPR116 antibody) at dilution of 1:5000 incubated at room temperature for 1.5 hours. This data was developed using the same antibody clone with 66967-2-PBS in a different storage buffer formulation.