

For Research Use Only

NFATC1 Monoclonal antibody, PBS Only



Catalog Number: 66963-1-PBS

Featured Product

Basic Information

Catalog Number:

66963-1-PBS

Size:

100ug, Concentration: 1mg/ml by Nanodrop;

Source:

Mouse

Isotype:

IgG1

Immunogen Catalog Number:

AG13014

GenBank Accession Number:

BC104753

GeneID (NCBI):

4772

UNIPROT ID:

O95644

Full Name:

nuclear factor of activated T-cells, cytoplasmic, calcineurin-dependent 1

Calculated MW:

716aa,78 kDa; 943aa,101 kDa

Observed MW:

101 kDa

Purification Method:

Protein A purification

CloneNo.:

1E1B10

Applications

Tested Applications:

WB, IHC, Indirect ELISA

Species Specificity:

Human

Background Information

NFATc1(nuclear factor-activated T cells c1) is one of the transcription factors family consisting 5 members which were considered as a regulator of T-cell activation. In immune cell, NFATc1 is located in the cytoplasm in a hyperphosphorylated state and translocates into the nucleus upon cell stimulation via dephosphorylation(PMID:28327458). One paper observed that ectopic expression and nuclear accumulation of NFATc1 in more than 60% of human pancreatic cancers (PMID:25623042). Several alternative splicing transcript variants encoding different isoforms have been identified for this gene. And different isoforms of this protein may regulate different cytokine gene expression. NFATc1 is a main transcriptional activator for cytokine genes in activated lymphoid cells. Also some studies demonstrated that NFATc1 plays the role of a master transcription regulator of osteoclast differentiation (PMID:25489571).

Storage

Storage:

Store at -80°C.

Storage Buffer:

PBS Only

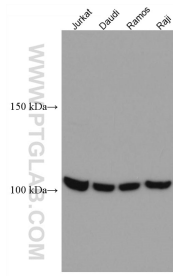
For technical support and original validation data for this product please contact:

T: 1 (888) 4PTGLAB (1-888-478-4522) (toll free in USA), or 1(312) 455-8498 (outside USA)

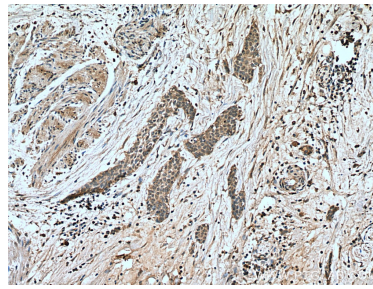
E: proteintech@ptglab.com
W: ptglab.com

This product is exclusively available under Proteintech Group brand and is not available to purchase from any other manufacturer.

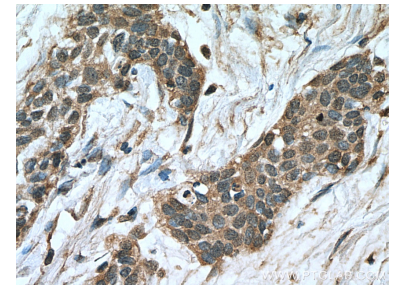
Selected Validation Data



Various lysates were subjected to SDS PAGE followed by western blot with 66963-1-Ig (NFATC1 antibody) at dilution of 1:5000 incubated at room temperature for 1.5 hours. This data was developed using the same antibody clone with 66963-1-PBS in a different storage buffer formulation.



Immunohistochemical analysis of paraffin-embedded human urothelial carcinoma tissue slide using 66963-1-Ig (NFATC1 antibody) at dilution of 1:300 (under 10x lens). Heat mediated antigen retrieval with Tris-EDTA buffer (pH 9.0). This data was developed using the same antibody clone with 66963-1-PBS in a different storage buffer formulation.



Immunohistochemical analysis of paraffin-embedded human urothelial carcinoma tissue slide using 66963-1-Ig (NFATC1 antibody) at dilution of 1:300 (under 40x lens). Heat mediated antigen retrieval with Tris-EDTA buffer (pH 9.0). This data was developed using the same antibody clone with 66963-1-PBS in a different storage buffer formulation.