

For Research Use Only

# RELB Monoclonal antibody, PBS Only



Catalog Number: 66947-1-PBS

## Basic Information

<b>Catalog Number:</b> 66947-1-PBS	<b>GenBank Accession Number:</b> BC028013	<b>Purification Method:</b> Protein G purification
<b>Size:</b> 100ug , Concentration: 1 mg/ml by Nanodrop;	<b>GeneID (NCBI):</b> 5971	<b>CloneNo.:</b> 1D7E10
<b>Source:</b> Mouse	<b>UNIPROT ID:</b> Q01201	
<b>Isotype:</b> IgG1	<b>Full Name:</b> v-rel reticuloendotheliosis viral oncogene homolog B	
<b>Immunogen Catalog Number:</b> AG13824	<b>Calculated MW:</b> 62 kDa	
	<b>Observed MW:</b> 62-65 kDa	

## Applications

**Tested Applications:**  
WB, Indirect ELISA

**Species Specificity:**  
Human

## Background Information

RELB, also named as Transcription factor RelB, is a 579 amino acid protein, which contains one RHD domain. RELB localizes in the nucleus and cytoplasm. RELB is a pleiotropic transcription factor which is present in almost all cell types and is involved in many biological processes such as inflammation, immunity, differentiation, cell growth, tumorigenesis and apoptosis.

## Storage

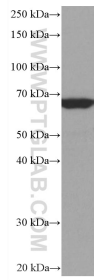
**Storage:**  
Store at -80°C.

**Storage Buffer:**  
PBS Only

For technical support and original validation data for this product please contact:  
T: 1 (888) 4PTGLAB (1-888-478-4522) (toll free in USA), or 1(312) 455-8498 (outside USA)      E: proteintech@ptglab.com  
W: ptglab.com

This product is exclusively available under Proteintech Group brand and is not available to purchase from any other manufacturer.

## Selected Validation Data



Raji cells were subjected to SDS PAGE followed by western blot with 66947-1-Ig (RELB antibody) at dilution of 1:2000 incubated at room temperature for 1.5 hours. This data was developed using the same antibody clone with 66947-1-PBS in a different storage buffer formulation.