

For Research Use Only

14-3-3E Monoclonal antibody, PBS Only



Catalog Number: 66946-1-PBS

Basic Information

Catalog Number:

66946-1-PBS

Size:

100ug, Concentration: 1 mg/ml by Nanodrop;

Source:

Mouse

Isotype:

IgG2b

Immunogen Catalog Number:

AG25186

GenBank Accession Number:

BC000179

GeneID (NCBI):

7531

UNIPROT ID:

P62258

Full Name:

tyrosine 3-monooxygenase/tryptophan 5-monooxygenase activation protein, epsilon polypeptide

Calculated MW:

255 aa, 29 kDa

Observed MW:

28-32 kDa

Purification Method:

Protein A purification

CloneNo.:

3A3A4

Applications

Tested Applications:

WB, IHC, ELISA

Species Specificity:

Human, mouse, rat

Background Information

14-3-3 epsilon (also known as YWHAE) is a member of 14-3-3 proteins which were the first phosphoserine/phosphothreonine-binding proteins to be discovered. 14-3-3 family members interact with a wide spectrum of proteins and possess diverse functions. Mammals express seven distinct 14-3-3 isoforms (gamma, epsilon, beta, zeta, sigma, theta, tau) that form multiple homo- and hetero- dimers. 14-3-3 proteins display the highest expression levels in the brain, and have been implicated in several neurodegenerative diseases, including Alzheimer's disease and amyotrophic lateral sclerosis.

Storage

Storage:

Store at -80°C.

Storage Buffer:

PBS only

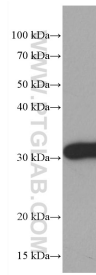
For technical support and original validation data for this product please contact:

T: 1 (888) 4PTGLAB (1-888-478-4522) (toll free in USA), or 1(312) 455-8498 (outside USA)

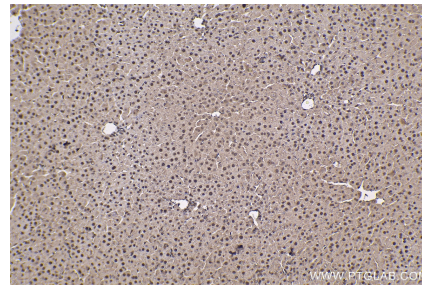
E: proteintech@ptglab.com
W: ptglab.com

This product is exclusively available under Proteintech Group brand and is not available to purchase from any other manufacturer.

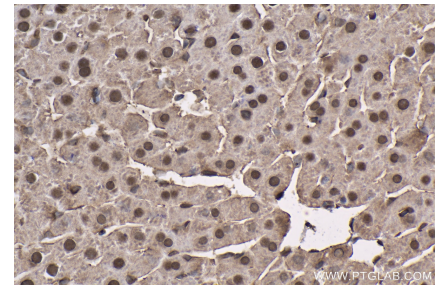
Selected Validation Data



HeLa cells were subjected to SDS PAGE followed by western blot with 66946-1-Ig (14-3-3E antibody) at dilution of 1:20000 incubated at room temperature for 1.5 hours. This data was developed using the same antibody clone with 66946-1-PBS in a different storage buffer formulation.



Immunohistochemical analysis of paraffin-embedded rat liver tissue slide using 66946-1-Ig (14-3-3E antibody) at dilution of 1:1 (under 10x lens). Heat mediated antigen retrieval with Tris-EDTA buffer (pH 9.0). This data was developed using the same antibody clone with 66946-1-PBS in a different storage buffer formulation.



Immunohistochemical analysis of paraffin-embedded rat liver tissue slide using 66946-1-Ig (14-3-3E antibody) at dilution of 1:1 (under 40x lens). Heat mediated antigen retrieval with Tris-EDTA buffer (pH 9.0). This data was developed using the same antibody clone with 66946-1-PBS in a different storage buffer formulation.