

For Research Use Only

Protein A Monoclonal antibody, PBS Only

Catalog Number: 66945-1-PBS

1 Publications



Basic Information

Catalog Number:

66945-1-PBS

Size:

100ug , Concentration: 1mg/ml by Nanodrop;

Source:

Mouse

Isotype:

IgG2a

GenBank Accession Number:

EU695225

GeneID (NCBI):

Full Name:

Purification Method:

Protein G purification

CloneNo.:

1G6A6

Applications

Tested Applications:

WB, Indirect ELISA

Cited Applications:

WB

Species Specificity:

staphylococcus aureus

Cited Species:

yeast

Background Information

Protein A is a surface protein of S.aureus which binds IgG molecules by their Fc region (PMID: 4163007). Engineered Protein A has been widely used in antibody purification due to its Fc binding property. However, trace of protein A might be leaked from purification resin thus causes contamination of final products. Antibody against Protein A or ELISA kits for Protein A could be used to evaluate leaking level of Protein A from resin. Protein A should be deactivated (e.g. boiling in 5-10% tween-20) before testing.

Notable Publications

Author	Pubmed ID	Journal	Application
Siyu Fan	39913206	Proc Natl Acad Sci U S A	WB

Storage

Storage:

Store at -80°C.

Storage Buffer:

PBS only

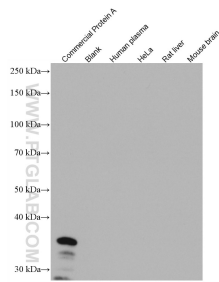
For technical support and original validation data for this product please contact:

T: 1 (888) 4PTGLAB (1-888-478-4522) (toll free in USA), or 1(312) 455-8498 (outside USA)

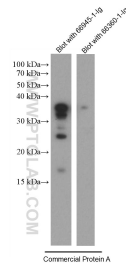
E: proteintech@ptglab.com
W: ptglab.com

This product is exclusively available under Proteintech Group brand and is not available to purchase from any other manufacturer.

Selected Validation Data



Commercial Protein A and negative samples (human plasma, HeLa cells, rat liver, mouse brain) were subjected to SDS-PAGE followed by western blot with 66945-1-Ig (Protein A antibody) at dilution of 1:10000 incubated at room temperature for 1.5 hours. This data was developed using the same antibody clone with 66945-1-PBS in a different storage buffer formulation.



Commercial Protein A was deactivated and lysed followed by SDS-PAGE and then blot with 66945-1-Ig (Protein A antibody) at dilution of 1:10000 and isotype control antibody 66360-1-Ig at 1:2000 incubated at room temperature for 1.5 hours. This data was developed using the same antibody clone with 66945-1-PBS in a different storage buffer formulation.