

For Research Use Only

RAB27B Monoclonal antibody, PBS Only



Catalog Number: 66944-1-PBS

Featured Product

Basic Information

Catalog Number:

66944-1-PBS

Size:

100ug, Concentration: 1mg/ml by Nanodrop;

Source:

Mouse

Isotype:

IgG2a

Immunogen Catalog Number:

AG18756

GenBank Accession Number:

BC027474

GeneID (NCBI):

5874

UNIPROT ID:

O00194

Full Name:

RAB27B, member RAS oncogene family

Calculated MW:

218 aa, 25 kDa

Observed MW:

25 kDa

Purification Method:

Protein A purification

CloneNo.:

2B9G9

Applications

Tested Applications:

Indirect ELISA, IHC, WB

Species Specificity:

human

Background Information

The Rab27 GTPase subfamily consists of two closely related homologs, Rab27a and Rab27b. Northern blot analysis revealed that Rab27b is expressed significantly only in testis, in which the predominant transcript was 1.4 kb in size. An 8-kb mRNA of unknown origin was detected in many tissues. Rab27b is associated with tubulovesicle membranes in the parietal cell and Rab27b may play a role in stimulation-associated membrane recruitment and gastric acid secretion. Rab27b is recently reported as a marker for breast cancer progression. It regulates invasive growth and metastasis in ER-positive breast cancer cell lines, and increased expression is associated with poor prognosis in humans.

Storage

Storage:

Store at -80°C.

Storage Buffer:

PBS Only

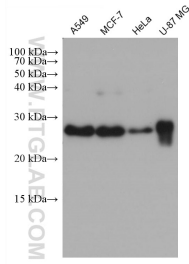
For technical support and original validation data for this product please contact:

T: 1 (888) 4PTGLAB (1-888-478-4522) (toll free in USA), or 1(312) 455-8498 (outside USA)

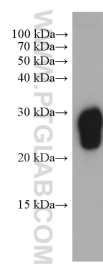
E: proteintech@ptglab.com
W: ptglab.com

This product is exclusively available under Proteintech Group brand and is not available to purchase from any other manufacturer.

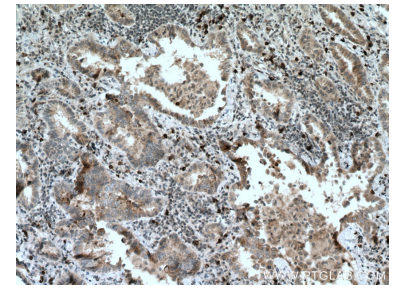
Selected Validation Data



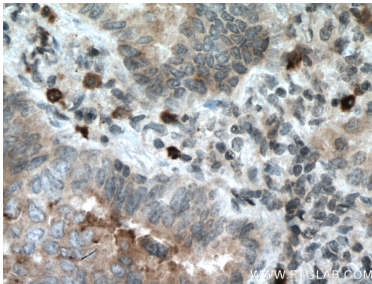
Various lysates were subjected to SDS PAGE followed by western blot with 66944-1-Ig (RAB27B antibody) at dilution of 1:3000 incubated at room temperature for 1.5 hours. This data was developed using the same antibody clone with 66944-1-PBS in a different storage buffer formulation.



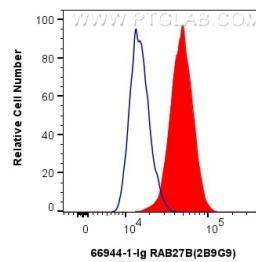
human peripheral blood platelets were subjected to SDS PAGE followed by western blot with 66944-1-Ig (RAB27B antibody) at dilution of 1:3000 incubated at room temperature for 1.5 hours. This data was developed using the same antibody clone with 66944-1-PBS in a different storage buffer formulation.



Immunohistochemical analysis of paraffin-embedded human lung cancer tissue slide using 66944-1-Ig (RAB27B antibody) at dilution of 1:200 (under 10x lens. Heat mediated antigen retrieval with Tris-EDTA buffer (pH 9.0). This data was developed using the same antibody clone with 66944-1-PBS in a different storage buffer formulation.



Immunohistochemical analysis of paraffin-embedded human lung cancer tissue slide using 66944-1-Ig (RAB27B antibody) at dilution of 1:200 (under 40x lens. Heat mediated antigen retrieval with Tris-EDTA buffer (pH 9.0). This data was developed using the same antibody clone with 66944-1-PBS in a different storage buffer formulation.



1×10^6 A431 cells were intracellularly stained with 0.4 ug Anti-Human RAB27B (66944-1-Ig, Clone:2B9G9) and CoraLite®488-Conjugated AffiniPure Goat Anti-Mouse IgG(H+L) at dilution 1:1000 (red), or 0.4 ug Mouse IgG2a isotype control Mouse McAb (66360-2-Ig, Clone: 11A1B2) (blue). Cells were fixed with 4% PFA and permeabilized with Flow Cytometry Perm Buffer (PF00011-C). This data was developed using the same antibody clone with 66944-1-PBS in a