

For Research Use Only

# ADH1B Monoclonal antibody, PBS Only



Catalog Number: 66939-1-PBS

Featured Product

## Basic Information

**Catalog Number:**

66939-1-PBS

**Size:**

100ug, Concentration: 1 mg/ml by Nanodrop;

**Source:**

Mouse

**Isotype:**

IgG2a

**Immunogen Catalog Number:**

AG10630

**GenBank Accession Number:**

BC033009

**GeneID (NCBI):**

125

**UNIPROT ID:**

P00325

**Full Name:**

alcohol dehydrogenase 1B (class I), beta polypeptide

**Calculated MW:**

375 aa, 40 kDa

**Observed MW:**

35-40 kDa

**Purification Method:**

Protein A purification

**CloneNo.:**

1F1B4

## Applications

**Tested Applications:**

WB, IF, IHC, Indirect ELISA

**Species Specificity:**

Human, Mouse, Rat, Pig

## Background Information

The ADH1B gene encodes the beta subunit of class I alcohol dehydrogenase (ADH), an enzyme that catalyzes the rate-limiting step for ethanol metabolism: the oxidation of alcohol to acetaldehyde. Class 1 ADH is a homo- or heterodimeric molecule, formed by the association of 3 types of class I ADH subunits, alpha (ADH1A), beta, and gamma (ADH1C). ADH1B is also named as ADH2 and belongs to the zinc-containing alcohol dehydrogenase family. This protein can exist as a homodimer (PMID:19365573).

## Storage

**Storage:**

Store at -80°C.

**Storage Buffer:**

PBS Only

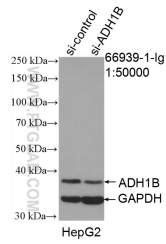
For technical support and original validation data for this product please contact:

T: 1 (888) 4PTGLAB (1-888-478-4522) (toll free in USA), or 1(312) 455-8498 (outside USA)

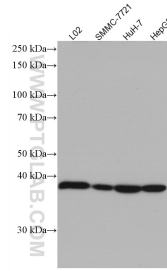
E: [proteintech@ptglab.com](mailto:proteintech@ptglab.com)  
W: [ptglab.com](http://ptglab.com)

This product is exclusively available under Proteintech Group brand and is not available to purchase from any other manufacturer.

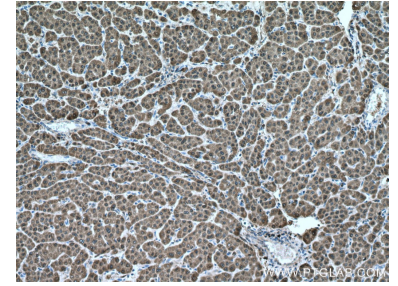
## Selected Validation Data



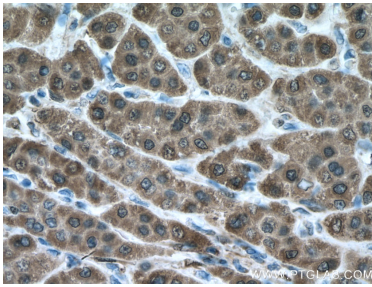
WB result of ADH1B antibody (66939-1-Ig: 1:50000; incubated at room temperature for 1.5 hours) with sh-Control and sh-ADH1B transfected HepG2 cells. This data was developed using the same antibody clone with 66939-1-PBS in a different storage buffer formulation.



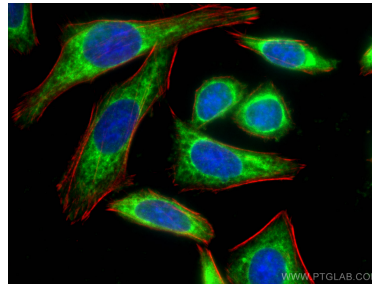
Various lysates were subjected to SDS PAGE followed by western blot with 66939-1-Ig (ADH1B antibody) at dilution of 1:5000 incubated at room temperature for 1.5 hours. This data was developed using the same antibody clone with 66939-1-PBS in a different storage buffer formulation.



Immunohistochemical analysis of paraffin-embedded human liver cancer tissue slide using 66939-1-Ig (ADH1B antibody) at dilution of 1:2000 (under 10x lens. Heat mediated antigen retrieval with Tris-EDTA buffer (pH 9.0). This data was developed using the same antibody clone with 66939-1-PBS in a different storage buffer formulation.



Immunohistochemical analysis of paraffin-embedded human liver cancer tissue slide using 66939-1-Ig (ADH1B antibody) at dilution of 1:2000 (under 40x lens. Heat mediated antigen retrieval with Tris-EDTA buffer (pH 9.0). This data was developed using the same antibody clone with 66939-1-PBS in a different storage buffer formulation.



Immunofluorescent analysis of (-20°C Ethanol) fixed HepG2 cells using ADH1B antibody (66939-1-Ig, Clone: 1F1B4) at dilution of 1:400 and Coralite®488-Conjugated AffiniPure Goat Anti-Mouse IgG(H+L), CL594-Phalloidin (red). This data was developed using the same antibody clone with 66939-1-PBS in a different storage buffer formulation.