

For Research Use Only

ARH Monoclonal antibody, PBS Only

Catalog Number: 66932-2-PBS



Basic Information

Catalog Number:

66932-2-PBS

Size:

100ug, Concentration: 1mg/ml by
Nanodrop;

Source:

Mouse

Isotype:

IgG2b

Immunogen Catalog Number:

AG28608

GenBank Accession Number:

BC029770

GeneID (NCBI):

26119

UNIPROT ID:

Q55W96

Full Name:

low density lipoprotein receptor
adaptor protein 1

Calculated MW:

308 aa, 34 kDa

Observed MW:

34 kDa

Purification Method:

Protein A purification

CloneNo.:

1D1B11

Applications

Tested Applications:

Indirect ELISA, WB

Species Specificity:

rat, human

Storage

Storage:

Store at -80°C.

Storage Buffer:

PBS Only

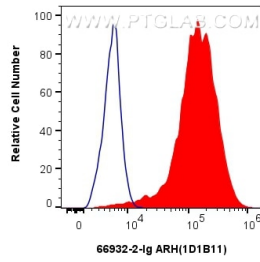
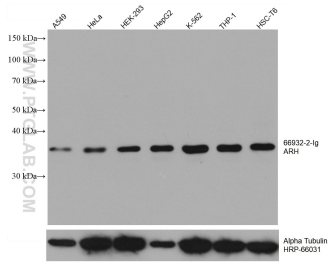
For technical support and original validation data for this product please contact:

T: 1 (888) 4PTGLAB (1-888-478-4522) (toll free
in USA), or 1(312) 455-8498 (outside USA)

E: proteintech@ptglab.com
W: ptglab.com

This product is exclusively available under Proteintech Group brand and is not available to purchase from any other manufacturer.

Selected Validation Data



Various lysates were subjected to SDS PAGE followed by western blot with 66932-2-Ig (ARH antibody) at dilution of 1:10000 incubated at room temperature for 1.5 hours. The membrane was stripped and reblotted with HRP-conjugated Alpha Tubulin Monoclonal antibody (HRP-66031) as loading control. This data was developed using the same antibody clone with 66932-2-PBS in a different storage buffer formulation.

1x10⁶ HeLa cells were intracellularly stained with 0.8 ug ARH Monoclonal antibody (66932-2-Ig, Clone:1D1B11) and CoraLite®488-Conjugated AffiniPure Goat Anti-Mouse IgG(H+L) (SA00013-1)(red), or 0.8 ug Mouse IgG2b isotype control Mouse McAb (66360-3-Ig, Clone: 11B8C4) (blue). Cells were fixed with 4% PFA and permeabilized with Flow Cytometry Perm Buffer (PF00011-C). This data was developed using the same antibody clone with 66932-2-PBS in a