

For Research Use Only

CFTR Monoclonal antibody, PBS Only

Catalog Number: 66928-1-PBS

Featured Product



Basic Information

Catalog Number:

66928-1-PBS

Size:

100ug, Concentration: 1 mg/ml by Nanodrop;

Source:

Mouse

Isotype:

IgG1

Immunogen Catalog Number:

AG27810

GenBank Accession Number:

NM_000492

GeneID (NCBI):

1080

UNIPROT ID:

P13569

Full Name:

cystic fibrosis transmembrane conductance regulator (ATP-binding cassette sub-family C, member 7)

Calculated MW:

168 kDa

Observed MW:

150 kDa

Purification Method:

Protein G purification

CloneNo.:

2F4A8

Applications

Tested Applications:

WB, IHC, ELISA

Species Specificity:

human, mouse, rat, rabbit

Background Information

CFTR is a member of the ATP-binding cassette (ABC) family of membrane transport proteins, functioning as a chloride channel responsible for ion flow across epithelial surfaces of lung, sinuses, pancreas, intestine, and liver. Mutations of CFTR cause cystic fibrosis (CF), a disorder affecting the respiratory, digestive, reproductive systems and sweat glands.

Storage

Storage:

Store at -80°C.

Storage Buffer:

PBS Only

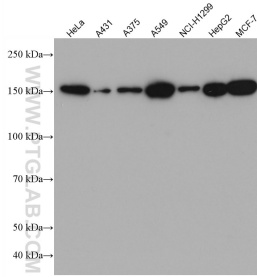
For technical support and original validation data for this product please contact:

T: 1 (888) 4PTGLAB (1-888-478-4522) (toll free in USA), or 1(312) 455-8498 (outside USA)

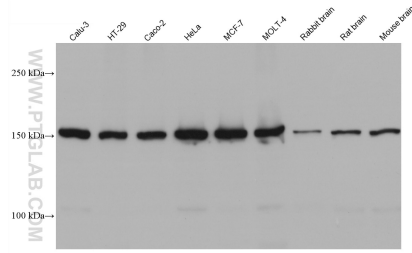
E: proteintech@ptglab.com
W: ptglab.com

This product is exclusively available under Proteintech Group brand and is not available to purchase from any other manufacturer.

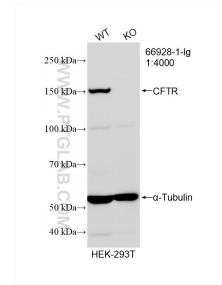
Selected Validation Data



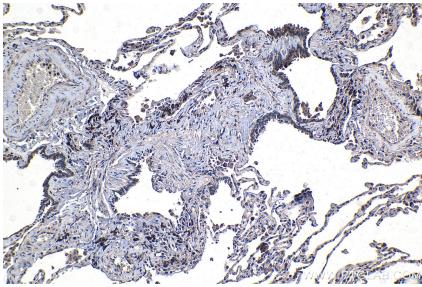
Various lysates were subjected to SDS PAGE followed by western blot with 66928-1-Ig (CFTR antibody) at dilution of 1:2000 incubated at room temperature for 1.5 hours. This data was developed using the same antibody clone with 66928-1-PBS in a different storage buffer formulation.



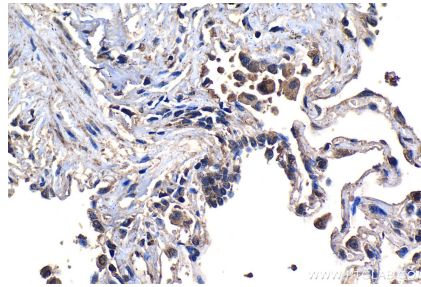
Various lysates were subjected to SDS PAGE followed by western blot with 66928-1-Ig (CFTR antibody) at dilution of 1:10000 incubated at room temperature for 1.5 hours. This data was developed using the same antibody clone with 66928-1-PBS in a different storage buffer formulation.



WB result of CFTR antibody (66928-1-Ig; 1:4000; room temperature for 1.5 hours) with wild-type and CFTR knockout HEK-293T cells. This data was developed using the same antibody clone with 66928-1-PBS in a different storage buffer formulation.



Immunohistochemical analysis of paraffin-embedded human lung tissue slide using 66928-1-Ig (CFTR antibody) at dilution of 1:500 (under 10x lens). Heat mediated antigen retrieval with Tris-EDTA buffer (pH 9.0). This data was developed using the same antibody clone with 66928-1-PBS in a different storage buffer formulation.



Immunohistochemical analysis of paraffin-embedded human lung tissue slide using 66928-1-Ig (CFTR antibody) at dilution of 1:500 (under 40x lens). Heat mediated antigen retrieval with Tris-EDTA buffer (pH 9.0). This data was developed using the same antibody clone with 66928-1-PBS in a different storage buffer formulation.