

For Research Use Only

# PTGER4 Monoclonal antibody

Catalog Number: 66921-1-Ig **4 Publications**



## Basic Information

<b>Catalog Number:</b> 66921-1-Ig	<b>GenBank Accession Number:</b> BC101534	<b>Purification Method:</b> Protein A purification
<b>Size:</b> 150ul, Concentration: 1200 µg/ml by Nanodrop and 1000 µg/ml by Bradford method using BSA as the standard;	<b>GeneID (NCBI):</b> 5734	<b>CloneNo.:</b> 4A2A12
<b>Source:</b> Mouse	<b>UNIPROT ID:</b> P35408	<b>Recommended Dilutions:</b> WB 1:5000-1:50000 IHC 1:500-1:2000 IF-P 1:200-1:800
<b>Isotype:</b> IgG2b	<b>Full Name:</b> prostaglandin E receptor 4 (subtype EP4)	
<b>Immunogen Catalog Number:</b> AG19262	<b>Calculated MW:</b> 488 aa, 53 kDa	
	<b>Observed MW:</b> 53 kDa	

## Applications

<b>Tested Applications:</b> WB, IHC, IF-P, FC (Intra), ELISA	<b>Positive Controls:</b> WB : pig brain tissue, rat brain tissue, mouse brain tissue, Jurkat cells, K-562 cells
<b>Cited Applications:</b> WB, IHC	<b>IHC :</b> human prostate hyperplasia tissue, mouse brain tissue
<b>Species Specificity:</b> human, mouse, rat, pig	<b>IF-P :</b> mouse brain tissue,
<b>Cited Species:</b> human, mouse	

**Note-IHC: suggested antigen retrieval with TE buffer pH 9.0; (\*) Alternatively, antigen retrieval may be performed with citrate buffer pH 6.0**

## Background Information

PTGER4 (Prostaglandin E2 receptor EP4 subtype, also known as EP4R) is a member of the G-protein coupled receptor family. This protein is one of four receptors identified for prostaglandin E2 (PGE2). May play an important role in regulating renal hemodynamics, intestinal epithelial transport, adrenal aldosterone secretion, and uterine function.

## Notable Publications

Author	Pubmed ID	Journal	Application
Yang Liu	35764614	Signal Transduct Target Ther	WB
Ling Xiao	39255799	Cell Metab	WB
Karen T Feehan	38773113	Nat Commun	IHC

## Storage

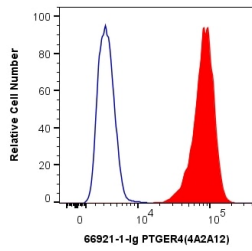
**Storage:**  
Store at -20°C. Stable for one year after shipment.  
**Storage Buffer:**  
PBS with 0.02% sodium azide and 50% glycerol pH 7.3.  
Aliquoting is unnecessary for -20°C storage

\*\*\* 20ul sizes contain 0.1% BSA

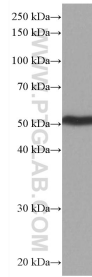
For technical support and original validation data for this product please contact:  
T: 1 (888) 4PTGLAB (1-888-478-4522) (toll free in USA), or 1(312) 455-8498 (outside USA)  
E: proteintech@ptglab.com  
W: ptglab.com

This product is exclusively available under Proteintech Group brand and is not available to purchase from any other manufacturer.

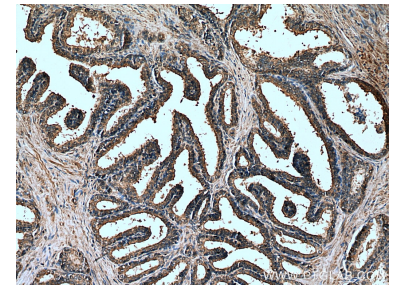
## Selected Validation Data



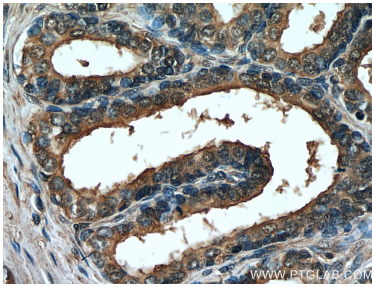
1X10<sup>6</sup> HepG2 cells were intracellularly stained with 0.4 ug Anti-Human PTGER4 (66921-1-Ig, Clone:4A2A12) and CoraLite®488-Conjugated AffiniPure Goat Anti-Mouse IgG(H+L) at dilution 1:1000 (red), or 0.4 ug Mouse IgG2b Isotype Control (MPC-11) (65128-1-Ig, Clone: MPC-11) (blue). Cells were fixed with 4% PFA and permeabilized with Flow Cytometry Perm Buffer (PF00011-C).



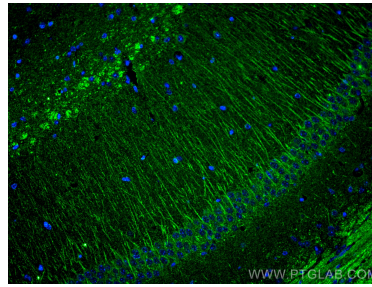
pig brain tissue were subjected to SDS PAGE followed by western blot with 66921-1-Ig (PTGER4 antibody) at dilution of 1:10000 incubated at room temperature for 1.5 hours.



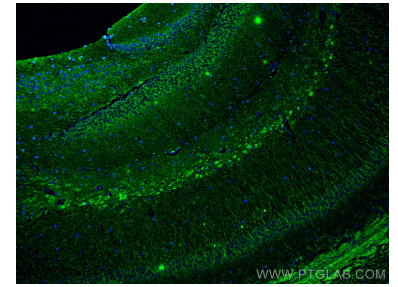
Immunohistochemical analysis of paraffin-embedded human prostate hyperplasia tissue slide using 66921-1-Ig (PTGER4 antibody) at dilution of 1:1000 (under 10x lens). Heat mediated antigen retrieval with Tris-EDTA buffer (pH 9.0).



Immunohistochemical analysis of paraffin-embedded human prostate hyperplasia tissue slide using 66921-1-Ig (PTGER4 antibody) at dilution of 1:1000 (under 40x lens). Heat mediated antigen retrieval with Tris-EDTA buffer (pH 9.0).



Immunofluorescent analysis of (4% PFA) fixed mouse brain tissue using PTGER4 antibody (66921-1-Ig, Clone: 4A2A12 ) at dilution of 1:400 and CoraLite®488-Conjugated AffiniPure Goat Anti-Mouse IgG(H+L).



Immunofluorescent analysis of (4% PFA) fixed mouse brain tissue using PTGER4 antibody (66921-1-Ig, Clone: 4A2A12 ) at dilution of 1:400 and CoraLite®488-Conjugated AffiniPure Goat Anti-Mouse IgG(H+L).