

For Research Use Only

# IDH2 Monoclonal antibody, PBS Only



Catalog Number: 66918-1-PBS

Featured Product

## Basic Information

**Catalog Number:**

66918-1-PBS

**Size:**

100ug, Concentration: 1mg/ml by Nanodrop;

**Source:**

Mouse

**Isotype:**

IgG1

**Immunogen Catalog Number:**

AG8950

**GenBank Accession Number:**

BC009244

**GeneID (NCBI):**

3418

**UNIPROT ID:**

P48735

**Full Name:**

isocitrate dehydrogenase 2 (NADP+), mitochondrial

**Calculated MW:**

452 aa, 51 kDa

**Observed MW:**

41-47 kDa

**Purification Method:**

Protein G purification

**CloneNo.:**

1F10A10

## Applications

**Tested Applications:**

WB, FC (Intra), Indirect ELISA

**Species Specificity:**

human

## Background Information

IDH2, also named as IDP and ICD-M, belongs to the isocitrate and isopropylmalate dehydrogenases family. It plays a role in intermediary metabolism and energy production. IDH2 is a mitochondrial NADP-dependent isocitrate dehydrogenase that catalyzes oxidative decarboxylation of isocitrate to alpha-ketoglutarate, producing NADPH. It may tightly associate or interact with the pyruvate dehydrogenase complex. IDH1 and IDH2 mutations could also contribute to tumorigenesis and cancer progression through increased mutagenesis. IDH2 has 2 isoforms with the MW of 51 kDa and 45 kDa, and the mature form is about 47 kDa and 41 kDa with the N-terminal transit peptide cleaved.

## Storage

**Storage:**

Store at -80°C.

**Storage Buffer:**

PBS Only

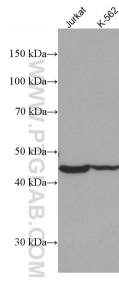
For technical support and original validation data for this product please contact:

T: 1 (888) 4PTGLAB (1-888-478-4522) (toll free in USA), or 1(312) 455-8498 (outside USA)

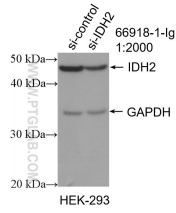
E: [proteintech@ptglab.com](mailto:proteintech@ptglab.com)  
W: [ptglab.com](http://ptglab.com)

This product is exclusively available under Proteintech Group brand and is not available to purchase from any other manufacturer.

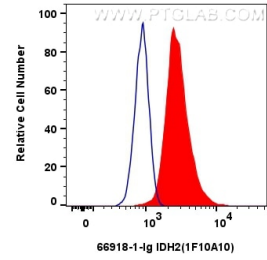
## Selected Validation Data



Various lysates were subjected to SDS PAGE followed by western blot with 66918-1-Ig (IDH2 antibody) at dilution of 1:2000 incubated at room temperature for 1.5 hours. This data was developed using the same antibody clone with 66918-1-PBS in a different storage buffer formulation.



WB result of IDH2 antibody (66918-1-Ig; 1:2000; incubated at room temperature for 1.5 hours) with sh-Control and sh-IDH2 transfected HEK-293 cells. This data was developed using the same antibody clone with 66918-1-PBS in a different storage buffer formulation.



1x10<sup>6</sup> HepG2 cells were intracellularly stained with 0.25 ug IDH2 Monoclonal antibody (66918-1-Ig, Clone:1F10A10) and CoraLite®488-Conjugated AffiniPure Goat Anti-Mouse IgG(H+L) (SA00013-1)(red), or 0.25 ug Mouse IgG1 Isotype Control (MOPC-21) (65124-1-Ig, Clone: MOPC-21) (blue). Cells were fixed with 4% PFA and permeabilized with Intracellular Staining Permeabilization Wash Buffer. This data was developed using the same antibody clone with 66918-1-PBS in