

For Research Use Only

NFATC2 Monoclonal antibody, PBS Only



Catalog Number: 66917-1-PBS

Basic Information

Catalog Number: 66917-1-PBS	GenBank Accession Number: BC136418	Purification Method: Protein G purification
Size: 100ug, Concentration: 1mg/ml by Nanodrop;	GeneID (NCBI): 4773	CloneNo.: 1F3B2
Source: Mouse	UNIPROT ID: Q13469	
Isotype: IgG1	Full Name: nuclear factor of activated T-cells, cytoplasmic, calcineurin-dependent 2	
Immunogen Catalog Number: AG17990	Calculated MW: 925 aa, 100 kDa	
	Observed MW: 135-140 kDa	

Applications

Tested Applications:
WB, IHC, Indirect ELISA

Species Specificity:
human, mouse

Background Information

Nuclear factor of activated T-cells, cytoplasmic 2 (NFATC2), also named NFAT1, or NFATP, is a 925 amino acid protein, which is expressed in thymus, spleen, heart, testis, brain, placenta, muscle and pancreas. Cytoplasmic for the phosphorylated form and nuclear after activation that is controlled by calcineurin-mediated dephosphorylation. Rapid nuclear exit of NFATC is thought to be one mechanism by which cells distinguish between sustained and transient calcium signals. The subcellular localization of NFATC plays a key role in the regulation of gene transcription. NFATC2 plays a role in the inducible expression of cytokine genes in T-cells, especially in the induction of the IL-2, IL-3, IL-4, TNF-alpha or GM-CSF. NFATC2 promotes invasive migration through the activation of GPC6 expression and WNT5A signaling pathway. The calculated molecular weight of NFATC2 is about 97-100 kDa, but the modified NFATC2 protein is about 135 kDa.

Storage

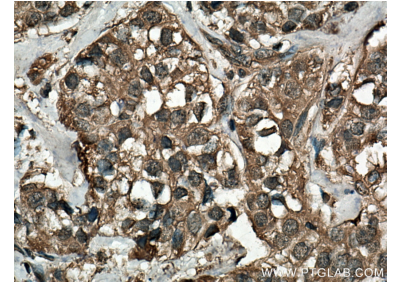
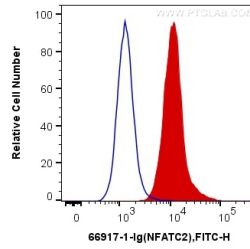
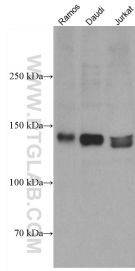
Storage:
Store at -80°C.

Storage Buffer:
PBS Only

For technical support and original validation data for this product please contact:
T: 1 (888) 4PTGLAB (1-888-478-4522) (toll free in USA), or 1(312) 455-8498 (outside USA) E: proteintech@ptglab.com
W: ptglab.com

This product is exclusively available under Proteintech Group brand and is not available to purchase from any other manufacturer.

Selected Validation Data



Various lysates were subjected to SDS PAGE followed by western blot with 66917-1-Ig (NFATC2 antibody) at dilution of 1:2000 incubated at room temperature for 1.5 hours. This data was developed using the same antibody clone with 66917-1-PBS in a different storage buffer formulation.

1×10^6 Jurkat cells were intracellularly stained with 0.2 ug Anti-Human NFATC2 (66917-1-Ig, Clone:1F3B2) and Coralite@488-Conjugated AffiniPure Goat Anti-Mouse IgG(H+L) at dilution 1:1000 (red), or 0.2 ug Mouse IgG1 Isotype Control (66360-1-Ig, Clone: T1F8D3F10) (blue). Cells were fixed with 4% PFA and permeabilized with Flow Cytometry Perm Buffer (PF00011-C). This data was developed using the same antibody clone with 66917-1-PBS in a different storage buffer

Immunohistochemical analysis of paraffin-embedded human breast cancer tissue slide using 66917-1-Ig (NFATC2 antibody) at dilution of 1:200 (under 40x lens). Heat mediated antigen retrieval with Tris-EDTA buffer (pH 9.0). This data was developed using the same antibody clone with 66917-1-PBS in a different storage buffer formulation.