

For Research Use Only

CX3CR1 Monoclonal antibody, PBS Only

Catalog Number: 66915-1-PBS



Basic Information

Catalog Number: 66915-1-PBS	GenBank Accession Number: BC028078	Purification Method: Protein A purification
Size: 100ug, Concentration: 1mg/ml by Nanodrop;	GeneID (NCBI): 1524	CloneNo.: 3D3B8
Source: Mouse	UNIPROT ID: P49238	
Isotype: IgG1	Full Name: chemokine (C-X3-C motif) receptor 1	
Immunogen Catalog Number: AG27698	Calculated MW: 40 kDa	
	Observed MW: 44 kDa	

Applications

Tested Applications:
WB, IHC, IF-P, ELISA

Species Specificity:
human, mouse

Background Information

CX3CR1, also known as GPR13, V28, and fractalkine receptor, belongs to the 7-transmembrane G protein-coupled receptor (GPCR) family. It is expressed in microglia, astrocytes, NK cells, monocytes/macrophages, and a subpopulation of T cells. CX3CR1 is the receptor for fractalkine (CX3CL1) and mediates both its adhesive and migratory functions. It also acts as a coreceptor with CD4 for HIV-1 virus envelope protein (in vitro), and some variations in the gene of CX3CR1 lead to increased susceptibility to HIV-1 infection and rapid progression to AIDS. Defects in CX3CR1 are a cause of susceptibility to age-related macular degeneration type 12 (ARMD12).

Storage

Storage:
Store at -80°C.

Storage Buffer:
PBS Only

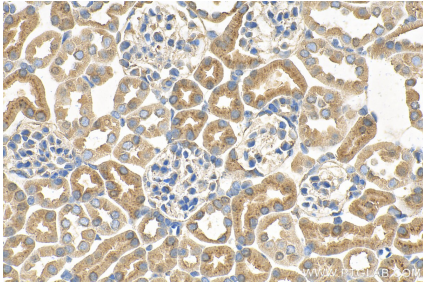
For technical support and original validation data for this product please contact:

T: 1 (888) 4PTGLAB (1-888-478-4522) (toll free in USA), or 1(312) 455-8498 (outside USA)

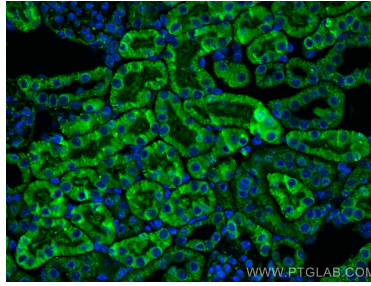
E: proteintech@ptglab.com
W: ptglab.com

This product is exclusively available under Proteintech Group brand and is not available to purchase from any other manufacturer.

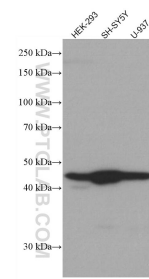
Selected Validation Data



Immunohistochemical analysis of paraffin-embedded mouse kidney tissue slide using 66915-1-Ig (CX3CR1 antibody) at dilution of 1:500 (under 40x lens). Heat mediated antigen retrieval with Tris-EDTA buffer (pH 9.0). This data was developed using the same antibody clone with 66915-1-PBS in a different storage buffer formulation.



Immunofluorescent analysis of (4% PFA) fixed mouse kidney tissue using CX3CR1 antibody (66915-1-Ig, Clone: 3D3B8) at dilution of 1:200 and CoraLite®488-Conjugated AffiniPure Goat Anti-Mouse IgG(H+L). This data was developed using the same antibody clone with 66915-1-PBS in a different storage buffer formulation.



Various lysates were subjected to SDS PAGE followed by western blot with 66915-1-Ig (CX3CR1 antibody) at dilution of 1:5000 incubated at room temperature for 1.5 hours. This data was developed using the same antibody clone with 66915-1-PBS in a different storage buffer formulation.