

For Research Use Only

INF2 Monoclonal antibody

Catalog Number: 66910-1-Ig



Basic Information

Catalog Number: 66910-1-Ig	GenBank Accession Number: BC008756	Purification Method: Protein A purification
Size: 150ul , Concentration: 1600 µg/ml by Nanodrop and 1000 µg/ml by Bradford method using BSA as the standard;	GeneID (NCBI): 64423	CloneNo.: 4A11A7
Source: Mouse	UNIPROT ID: Q27J81	Recommended Dilutions: WB 1:1000-1:4000 IHC 1:50-1:500 IF/ICC 1:50-1:500
Isotype: IgG2a	Full Name: inverted formin, FH2 and WH2 domain containing	
Immunogen Catalog Number: AG17043	Calculated MW: 1249 aa, 136 kDa	
	Observed MW: 150-170 kDa	

Applications

Tested Applications:

WB, IF, IHC, ELISA

Species Specificity:

Human

Note-IHC: suggested antigen retrieval with TE buffer pH 9.0; (*) Alternatively, antigen retrieval may be performed with citrate buffer pH 6.0

Positive Controls:

WB : HeLa cells, A431 cells, PC-3 cells, HEK-293 cells, HepG2 cells

IHC : human kidney tissue,

IF/ICC : HepG2 cells,

Background Information

INF2 is a member of the formin family of actin-regulating proteins. INF2 is peripherally bound to the cytoplasmic face of the endoplasmic reticulum (ER). Mutations in the formin gene INF2 cause focal segmental glomerulosclerosis. The predicted MW of INF2 is around 136 kDa, while higher molecular mass from 140-200 kDa has been reported in literature (26383224,20493814,19366733).

Storage

Storage:

Store at -20°C. Stable for one year after shipment.

Storage Buffer:

PBS with 0.02% sodium azide and 50% glycerol pH 7.3.

Aliquoting is unnecessary for -20°C storage

*** 20ul sizes contain 0.1% BSA

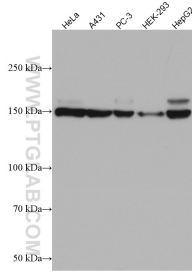
For technical support and original validation data for this product please contact:

T: 1 (888) 4PTGLAB (1-888-478-4522) (toll free in USA), or 1(312) 455-8498 (outside USA)

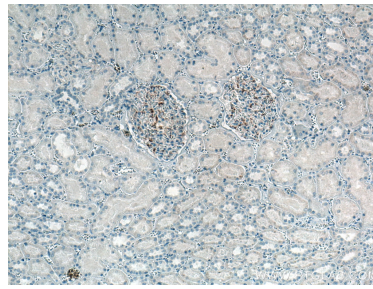
E: proteintech@ptglab.com
W: ptglab.com

This product is exclusively available under Proteintech Group brand and is not available to purchase from any other manufacturer.

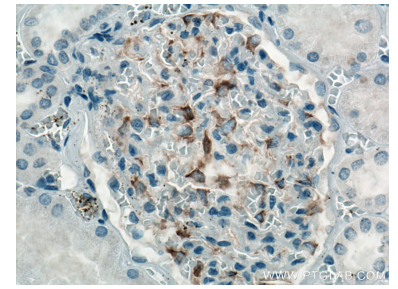
Selected Validation Data



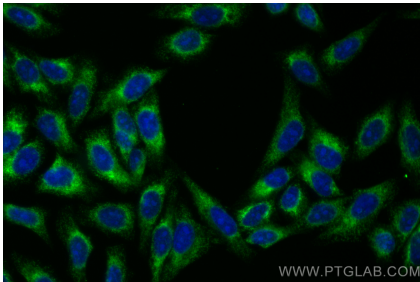
Various lysates were subjected to SDS PAGE followed by western blot with 66910-1-Ig (INF2 antibody) at dilution of 1:2000 incubated at room temperature for 1.5 hours.



Immunohistochemical analysis of paraffin-embedded human kidney tissue slide using 66910-1-Ig (INF2 antibody) at dilution of 1:200 (under 10x lens). Heat mediated antigen retrieval with Tris-EDTA buffer (pH 9.0).



Immunohistochemical analysis of paraffin-embedded human kidney tissue slide using 66910-1-Ig (INF2 antibody) at dilution of 1:200 (under 40x lens). Heat mediated antigen retrieval with Tris-EDTA buffer (pH 9.0).



Immunofluorescent analysis of (-20°C Ethanol) fixed HepG2 cells using INF2 antibody (66910-1-Ig, Clone: 4A11A7) at dilution of 1:200 and CoraLite®488-Conjugated AffiniPure Goat Anti-Mouse IgG(H+L).