

For Research Use Only

C7 Monoclonal antibody, PBS Only

Catalog Number: 66908-1-PBS



Basic Information

Catalog Number: 66908-1-PBS	GenBank Accession Number: BC063851	Purification Method: Protein G purification
Size: 100ug, Concentration: 1mg/ml by Nanodrop;	GeneID (NCBI): 730	CloneNo.: 1H9C4
Source: Mouse	UNIPROT ID: P10643	
Isotype: IgG1	Full Name: complement component 7	
Immunogen Catalog Number: AG12552	Calculated MW: 843 aa, 94 kDa	
	Observed MW: 100 kDa	

Applications

Tested Applications:
WB, IF, Indirect ELISA

Species Specificity:
Human

Background Information

C7, a single-chain plasma glycoprotein, is a component of the complement system. It is a constituent of the membrane attack complex (MAC) that plays a key role in the innate and adaptive immune response by forming pores in the plasma membrane of target cells. C7 serves as a membrane anchor. People with C7 deficiency are prone to bacterial infection.

Storage

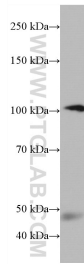
Storage:
Store at -80°C.

Storage Buffer:
PBS Only

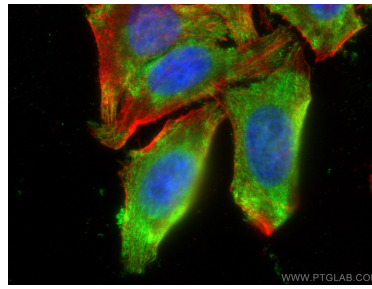
For technical support and original validation data for this product please contact:
T: 1 (888) 4PTGLAB (1-888-478-4522) (toll free in USA), or 1(312) 455-8498 (outside USA) E: proteintech@ptglab.com
W: ptglab.com

This product is exclusively available under Proteintech Group brand and is not available to purchase from any other manufacturer.

Selected Validation Data



human plasma were subjected to SDS PAGE followed by western blot with 66908-1-Ig (C7 antibody) at dilution of 1:5000 incubated at room temperature for 1.5 hours. This data was developed using the same antibody clone with 66908-1-PBS in a different storage buffer formulation.



Immunofluorescent analysis of (-20°C Ethanol) fixed HepG2 cells using C7 antibody (66908-1-Ig, Clone: 1H9C4) at dilution of 1:800 and CoraLite®488-Conjugated AffiniPure Goat Anti-Mouse IgG(H+L), CL594-phalloidin (red). This data was developed using the same antibody clone with 66908-1-PBS in a different storage buffer formulation.