

For Research Use Only

GLI1 Monoclonal antibody

Catalog Number: 66905-1-Ig

Featured Product

77 Publications



Basic Information

Catalog Number: 66905-1-Ig	GenBank Accession Number: BC013000	Purification Method: Protein A purification
Size: 150ul, Concentration: 1000 ug/ml by Nanodrop;	GeneID (NCBI): 2735	CloneNo.: 1D2B2
Source: Mouse	UNIPROT ID: P08151	Recommended Dilutions: WB 1:5000-1:50000 IF/ICC 1:400-1:1600
Isotype: IgG1	Full Name: GLI family zinc finger 1	
Immunogen Catalog Number: AG27832	Calculated MW: 1106 aa, 118 kDa	
	Observed MW: 150 kDa	

Applications

Tested Applications: WB, IF/ICC, ELISA	Positive Controls: WB : A549 cells, C6 cells, HEK-293 cells, human testis tissue, 4T1 cells, mouse brain tissue, NCI-H1299 cells, PC-3 cells, MCF-7 cells, MDA-MB-231 cells, pig brain tissue, rat brain tissue, BxPC-3 cells, U-251 cells, mouse liver tissue, rat liver tissue
Cited Applications: WB, IHC, IF, IP, CoIP	IF/ICC : HeLa cells,
Species Specificity: human, mouse, rat, pig	
Cited Species: human, mouse, rat	

Background Information

GLI1, also known as Glioma-associated oncogene, is a 1106 amino acid protein, which belongs to the GLI C2H2-type zinc-finger protein family. GLI1 is detected in testis and Also expressed in the brain with highest expression in the cerebellum, optic nerve and olfactory tract. GLI1 is tethered in the cytoplasm by binding to SUFU (PubMed:10806483). GLI1 is activated and translocated to the nucleus promoted by interaction with STK36 (PubMed:10806483). Phosphorylation of GLI1 by ULK3 may promote nuclear localization (PubMed:19878745). GLI1 as a transcriptional activator may regulate the transcription of specific genes during normal development (PubMed:19706761). GLI1 plays a role in craniofacial development and digital development, as well as development of the central nervous system and gastrointestinal tract and Mediates SHH signaling (PubMed:19706761). GLI1 plays a role in cell proliferation and differentiation via its role in SHH signaling.

Notable Publications

Author	Pubmed ID	Journal	Application
Qian Wang	32999044	Mol Cancer Ther	WB
Daosen Chen	34659557	J Cancer	WB,IHC
Yijia Jia	34522723	Regen Ther	IHC

Storage

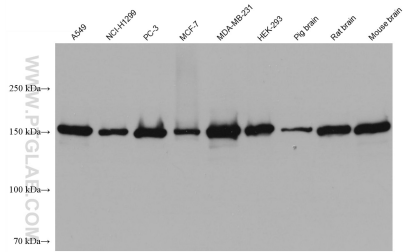
Storage:
Store at -20°C. Stable for one year after shipment.
Storage Buffer:
PBS with 0.02% sodium azide and 50% glycerol pH 7.3.
Aliquoting is unnecessary for -20°C storage

*** 20ul sizes contain 0.1% BSA

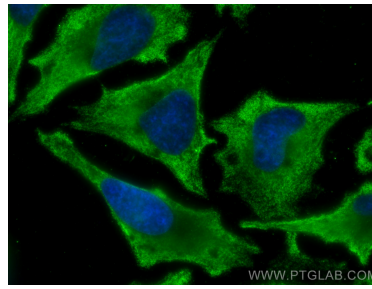
For technical support and original validation data for this product please contact:
T: 1 (888) 4PTGLAB (1-888-478-4522) (toll free in USA), or 1(312) 455-8498 (outside USA)
E: proteintech@ptglab.com
W: ptglab.com

This product is exclusively available under Proteintech Group brand and is not available to purchase from any other manufacturer.

Selected Validation Data



Various lysates were subjected to SDS PAGE followed by western blot with 66905-1-Ig (GLI1 antibody) at dilution of 1:20000 incubated at room temperature for 1.5 hours.



Immunofluorescent analysis of (-20°C Ethanol) fixed HeLa cells using GLI1 antibody (66905-1-Ig, Clone: 1D2B2) at dilution of 1:800 and CoraLite® 488-Conjugated AffiniPure Goat Anti-Mouse IgG(H+L).