

For Research Use Only

Calnexin Monoclonal antibody

Catalog Number: 66903-1-Ig

Featured Product

39 Publications



Basic Information

Catalog Number: 66903-1-Ig	GenBank Accession Number: BC003552	Purification Method: Protein A purification
Size: 150ul, Concentration: 1000 µg/ml by Nanodrop;	GeneID (NCBI): 821	CloneNo.: 2A2C6
Source: Mouse	Full Name: calnexin	Recommended Dilutions: WB 1:5000-1:20000 IHC 1:1000-1:4000 IF 1:200-1:800
Isotype: IgG1	Calculated MW: 90 kDa	
Immunogen Catalog Number: AG25535	Observed MW: 90 kDa	

Applications

Tested Applications: IF, IHC, WB, ELISA	Positive Controls:
Cited Applications: IF, WB	WB : HeLa cells, HEK-293 cells, HepG2 cells, Jurkat cells, K-562 cells, HSC-T6 cells, PC-12 cells, NIH/3T3 cells, RAW 264.7 cells
Species Specificity: Human, mouse, rat	IHC : human hepatocirrhosis tissue,
Cited Species: human, rat, mouse, pig	IF : HeLa cells, HepG2 cells
Note-IHC: suggested antigen retrieval with TE buffer pH 9.0; (*) Alternatively, antigen retrieval may be performed with citrate buffer pH 6.0	

Background Information

Calnexin is a molecular chaperone that resides in the endoplasmic reticulum (ER) and participates in the folding and assembly of newly synthesized proteins. Calnexin is highly abundant in ER and is frequently used as an ER marker.

Notable Publications

Author	Pubmed ID	Journal	Application
Pu Song	36125406	EMBO Rep	IF
Folnetti A Alvarez	36114323	Breast Cancer Res Treat	WB
Xueqiang Peng	32949647	Biochim Biophys Acta Mol Cell Res	WB

Storage

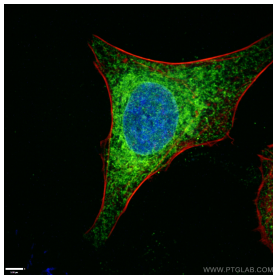
Storage:
Store at -20°C. Stable for one year after shipment.
Storage Buffer:
PBS with 0.02% sodium azide and 50% glycerol pH 7.3.
Aliquoting is unnecessary for -20°C storage

*** 20ul sizes contain 0.1% BSA

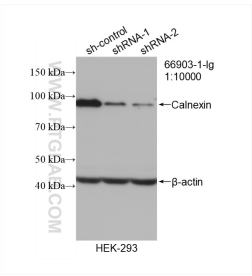
For technical support and original validation data for this product please contact:
T: 1 (888) 4PTGLAB (1-888-478-4522) (toll free in USA), or 1(312) 455-8498 (outside USA)
E: proteintech@ptglab.com
W: ptglab.com

This product is exclusively available under Proteintech Group brand and is not available to purchase from any other manufacturer.

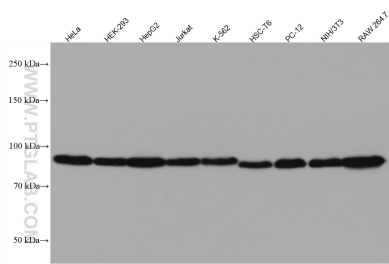
Selected Validation Data



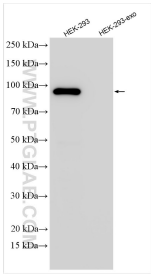
Immunofluorescent analysis of (4% PFA) fixed HeLa cells using 66903-1-Ig (Calnexin antibody), at dilution of 1:400 and Coralite® 488-Conjugated AffiniPure Goat Anti-Mouse IgG(H+L). Red: staining with Coralite555-Phalloidin.



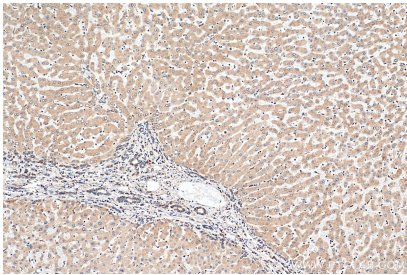
WB result of Calnexin antibody (66903-1-Ig; 1:10000; incubated at room temperature for 1.5 hours) with sh-Control and sh-Calnexin transfected HEK-293 cells.



Various lysates were subjected to SDS PAGE followed by western blot with 66903-1-Ig (Calnexin antibody) at dilution of 1:20000 incubated at room temperature for 1.5 hours.



HEK-293 cells and HEK-293-derived exosomes (HEK-293-exo) were subjected to SDS PAGE followed by western blot with 66903-1-Ig (Calnexin antibody) at dilution of 1:10000 incubated at room temperature for 1.5 hours.



Immunohistochemical analysis of paraffin-embedded human hepatocirrhosis tissue slide using 66903-1-Ig (Calnexin antibody) at dilution of 1:2000 (under 10x lens). Heat mediated antigen retrieval with Tris-EDTA buffer (pH 9.0).