

For Research Use Only

UBE2S Monoclonal antibody, PBS Only



Catalog Number: 66897-1-PBS

Basic Information

Catalog Number: 66897-1-PBS	GenBank Accession Number: BC066948	Purification Method: Protein A purification
Size: 100ug , Concentration: 1 mg/ml by Nanodrop;	GeneID (NCBI): 27338	CloneNo.: 8C9E6
Source: Mouse	UNIPROT ID: Q16763	
Isotype: IgG2b	Full Name: ubiquitin-conjugating enzyme E2S	
Immunogen Catalog Number: AG5378	Calculated MW: 222 aa, 24 kDa	
	Observed MW: 28 kDa	

Applications

Tested Applications:
WB, Indirect ELISA

Species Specificity:
Human

Background Information

UBE2S(Ubiquitin-conjugating enzyme E2 S) is also named as E2EPF and belongs to the ubiquitin-conjugating enzyme family. It acts as an essential factor of the anaphase promoting complex/cyclosome (APC/C) and a cell cycle-regulated ubiquitin ligase that controls progression through mitosis. Overexpression of UBE2S can increase tumor cell proliferation, invasion, and metastasis through the VHL-HIF pathway (PMID:16819549).

Storage

Storage:
Store at -80°C.

Storage Buffer:
PBS Only

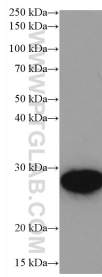
For technical support and original validation data for this product please contact:

T: 1 (888) 4PTGLAB (1-888-478-4522) (toll free in USA), or 1(312) 455-8498 (outside USA)

E: proteintech@ptglab.com
W: ptglab.com

This product is exclusively available under Proteintech Group brand and is not available to purchase from any other manufacturer.

Selected Validation Data



HEK-293 cells were subjected to SDS PAGE followed by western blot with 66897-1-Ig (UBE2S antibody) at dilution of 1:5000 incubated at room temperature for 1.5 hours. This data was developed using the same antibody clone with 66897-1-PBS in a different storage buffer formulation.