

For Research Use Only

S6 Ribosomal protein Monoclonal antibody

Catalog Number: 66886-1-Ig **14 Publications**



Basic Information

Catalog Number: 66886-1-Ig	GenBank Accession Number: BC000524	Purification Method: Protein A purification
Size: 150ul, Concentration: 1500 ug/ml by Nanodrop and 755 ug/ml by Bradford method using BSA as the standard;	GeneID (NCBI): 6194	CloneNo.: 1C3E10
Source: Mouse	UNIPROT ID: P62753	Recommended Dilutions: WB 1:5000-1:50000 IHC 1:500-1:2000 IF/ICC 1:50-1:500
Isotype: IgG2a	Full Name: ribosomal protein S6	
Immunogen Catalog Number: AG6599	Calculated MW: 29 kDa	
	Observed MW: 29-32 kDa	

Applications

Tested Applications: WB, IHC, IF/ICC, FC (Intra), ELISA	Positive Controls: WB : HeLa cells, A431 cells, NIH/3T3 cells, rat liver tissue, HEK-293 cells, Jurkat cells, HSC-T6 cells, RAW 264.7 cells, HEK-293 cells
Cited Applications: WB, IF	IHC : human placenta tissue, mouse pancreas tissue, rat stomach tissue
Species Specificity: human, mouse, rat	IF/ICC : HepG2 cells,
Cited Species: human, mouse, rat	

Note-IHC: suggested antigen retrieval with TE buffer pH 9.0; (*) Alternatively, antigen retrieval may be performed with citrate buffer pH 6.0

Background Information

Ribosomal protein S6 (RPS6), Phosphoprotein NP33. It may play an important role in controlling cell growth and proliferation through the selective translation of particular classes of mRNA. Ribosomal protein S6 is the major substrate of protein kinases in eukaryote ribosomes. The phosphorylation is stimulated by growth factors, tumor promoting agents, and mitogens. It is dephosphorylated at growth arrest. Phosphorylated at Ser-235 and Ser-236 by RPS6KA1 and RPS6KA3; phosphorylation at these sites facilitates the assembly of the preinitiation complex.

Notable Publications

Author	Pubmed ID	Journal	Application
Yifan Hong	34649140	Ecotoxicol Environ Saf	WB
Dongdong Yang	36417878	Cell Rep	WB
Yaoliang Tang	35596155	BMC Cancer	WB

Storage

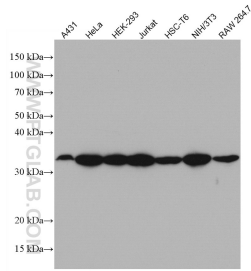
Storage:
Store at -20°C. Stable for one year after shipment.
Storage Buffer:
PBS with 0.02% sodium azide and 50% glycerol, pH7.3
Aliquoting is unnecessary for -20°C storage

*** 20ul sizes contain 0.1% BSA

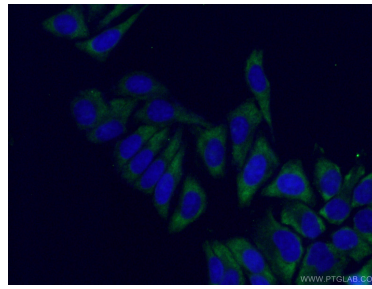
For technical support and original validation data for this product please contact:
T: 1 (888) 4PTGLAB (1-888-478-4522) (toll free in USA), or 1(312) 455-8498 (outside USA)
E: proteintech@ptglab.com
W: ptglab.com

This product is exclusively available under Proteintech Group brand and is not available to purchase from any other manufacturer.

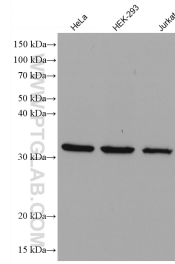
Selected Validation Data



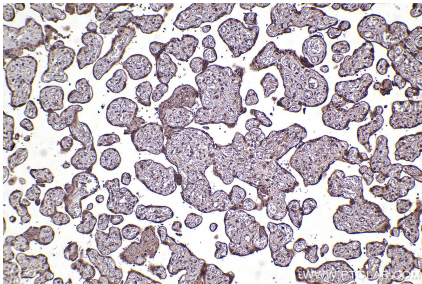
Various lysates were subjected to SDS PAGE followed by western blot with 66886-1-Ig (S6 Ribosomal protein antibody) at dilution of 1:500 incubated at room temperature for 1.5 hours.



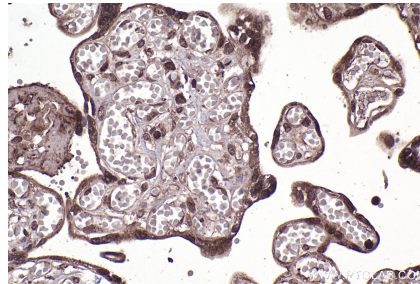
Immunofluorescent analysis of (-20°C Ethanol) fixed HepG2 cells using 66886-1-Ig (S6 Ribosomal protein antibody) at dilution of 1:100 and CoraLite488-Conjugated AffiniPure Goat Anti-Mouse IgG(H+L).



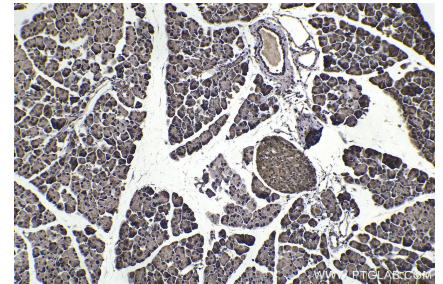
Various lysates were subjected to SDS PAGE followed by western blot with 66886-1-Ig (S6 Ribosomal protein antibody) at dilution of 1:15000 incubated at room temperature for 1.5 hours.



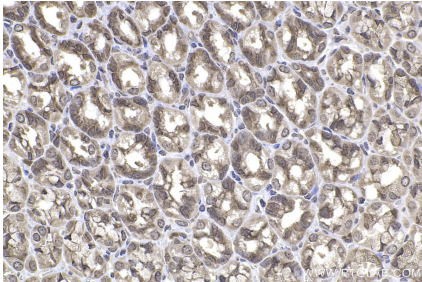
Immunohistochemical analysis of paraffin-embedded human placenta tissue slide using 66886-1-Ig (S6 Ribosomal protein antibody) at dilution of 1:1000 (under 10x lens). Heat mediated antigen retrieval with Tris-EDTA buffer (pH 9.0).



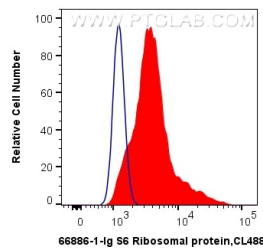
Immunohistochemical analysis of paraffin-embedded human placenta tissue slide using 66886-1-Ig (S6 Ribosomal protein antibody) at dilution of 1:1000 (under 40x lens). Heat mediated antigen retrieval with Tris-EDTA buffer (pH 9.0).



Immunohistochemical analysis of paraffin-embedded mouse pancreas tissue slide using 66886-1-Ig (S6 Ribosomal protein antibody) at dilution of 1:1000 (under 10x lens). Heat mediated antigen retrieval with Tris-EDTA buffer (pH 9.0).



Immunohistochemical analysis of paraffin-embedded rat stomach tissue slide using 66886-1-Ig (S6 Ribosomal protein antibody) at dilution of 1:1000 (under 40x lens). Heat mediated antigen retrieval with Tris-EDTA buffer (pH 9.0).



1×10^6 HepG2 cells were intracellularly stained with 0.4 μ g Anti-Human S6 Ribosomal protein (66886-1-Ig, Clone:1C3E10) and CoraLite@488-Conjugated AffiniPure Goat Anti-Mouse IgG(H+L) at dilution 1:1000 (red), or 0.4 μ g Control Antibody. Cells were fixed with 4% PFA and permeabilized with Flow Cytometry Perm Buffer (PF00011-C).