

For Research Use Only

Flotillin 2 Monoclonal antibody, PBS Only



Catalog Number: 66881-1-PBS

Basic Information

Catalog Number: 66881-1-PBS	GenBank Accession Number: BC017292	Purification Method: Protein A purification
Size: 100ug , Concentration: 1mg/ml by Nanodrop;	GeneID (NCBI): 2319	CloneNo.: 1E11G12
Source: Mouse	UNIPROT ID: Q14254	
Isotype: IgG1	Full Name: flotillin 2	
Immunogen Catalog Number: AG28308	Calculated MW: 379 aa, 42 kDa	
	Observed MW: 45 kDa	

Applications

Tested Applications:
WB, IHC, IF/ICC, Indirect ELISA

Species Specificity:
human, mouse, rat, pig, rabbit

Background Information

Flotillins are membrane-associated proteins that contain two homologous isoforms, flotillin 1 (FLOT1) and flotillin 2 (FLOT2). They are highly conserved and widely expressed proteins that commonly used as markers of lipid rafts. Flotillins are involved in various signaling pathways, cell adhesion, membrane trafficking and axonal growth.

Storage

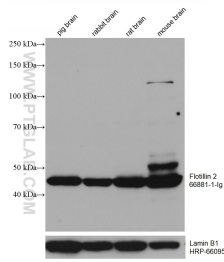
Storage:
Store at -80°C.

Storage Buffer:
PBS Only

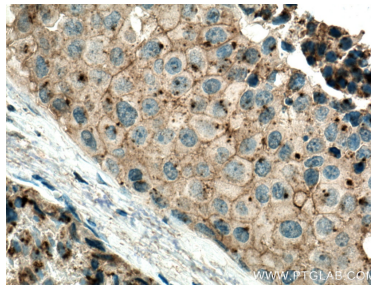
For technical support and original validation data for this product please contact:
T: 1 (888) 4PTGLAB (1-888-478-4522) (toll free in USA), or 1(312) 455-8498 (outside USA) E: proteintech@ptglab.com
W: ptglab.com

This product is exclusively available under Proteintech Group brand and is not available to purchase from any other manufacturer.

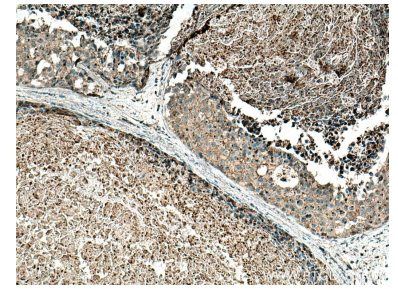
Selected Validation Data



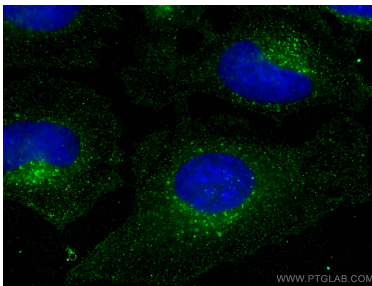
Various lysates were subjected to SDS PAGE followed by western blot with 66881-1-Ig (Flotillin 2 antibody) at dilution of 1:10000 incubated at room temperature for 1.5 hours. The membrane was stripped and reblotted with HRP-conjugated Lamin B1 Monoclonal antibody (HRP-66095) as loading control. This data was developed using the same antibody clone with 66881-1-PBS in a different storage buffer formulation.



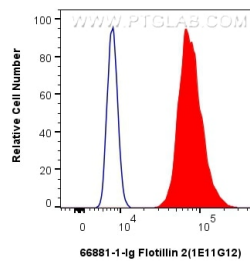
Immunohistochemical analysis of paraffin-embedded human breast cancer tissue slide using 66881-1-Ig (Flotillin 2 antibody) at dilution of 1:400 (under 40x lens). Heat mediated antigen retrieval with Tris-EDTA buffer (pH 9.0). This data was developed using the same antibody clone with 66881-1-PBS in a different storage buffer formulation.



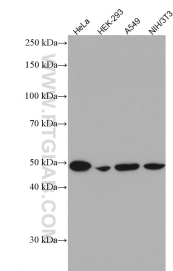
Immunohistochemical analysis of paraffin-embedded human breast cancer tissue slide using 66881-1-Ig (Flotillin 2 antibody) at dilution of 1:400 (under 10x lens). Heat mediated antigen retrieval with Tris-EDTA buffer (pH 9.0). This data was developed using the same antibody clone with 66881-1-PBS in a different storage buffer formulation.



Immunofluorescent analysis of (-20°C Methanol) fixed HeLa cells using Flotillin 2 antibody (66881-1-Ig, Clone: 1E11G12) at dilution of 1:4000 and CoraLite®488-Conjugated AffiniPure Goat Anti-Mouse IgG(H+L). This data was developed using the same antibody clone with 66881-1-PBS in a different storage buffer formulation.



1x10⁶ HeLa cells were intracellularly stained with 0.4 ug Flotillin 2 Monoclonal antibody (66881-1-Ig, Clone:1E11G12) and CoraLite488-conjugated Donkey Anti-Mouse IgG(H+L)(SA00013-5)(red), or 0.4 ug Mouse IgG1 Isotype Control (MOPC-21) (65124-1-Ig, Clone: MOPC-21) (blue). Cells were fixed with 4% PFA and permeabilized with Flow Cytometry Perm Buffer (PF00011-C). This data was developed using the same antibody clone with 66881-1-PBS in a different storage buffer



Various lysates were subjected to SDS PAGE followed by western blot with 66881-1-Ig (Flotillin 2 antibody) at dilution of 1:2000 incubated at room temperature for 1.5 hours. This data was developed using the same antibody clone with 66881-1-PBS in a different storage buffer formulation.