

For Research Use Only

GRB2 Monoclonal antibody, PBS Only



Catalog Number: 66880-1-PBS

Featured Product

Basic Information

| | | |
|--|---|---|
| Catalog Number: 66880-1-PBS | GenBank Accession Number: BC000631 | Purification Method: Protein A purification |
| Size: 100ug , Concentration: 1mg/ml by Nanodrop; | GeneID (NCBI): 2885 | CloneNo.: 1C5D11 |
| Source: Mouse | UNIPROT ID: P62993 | |
| Isotype: IgG1 | Full Name: growth factor receptor-bound protein 2 | |
| Immunogen Catalog Number: AG0395 | Calculated MW: 25 kDa | |
| | Observed MW: 25 kDa | |

Applications

Tested Applications:
WB, IHC, ELISA

Species Specificity:
Human, Mouse, Rat

Background Information

GRB2 (growth factor receptor-bound protein 2) binds the epidermal growth factor receptor and contains one SH2 domain and two SH3 domains. Two alternatively spliced transcript variants encoding different isoforms have been found for this gene. N-SH3 domain of Grb2 was involved in the protein vesicular localization including amyloid- β protein precursor (A β PP). Involvement of GRB2 in Ras-signaling pathway has been reported, recent finding show that GRB2 may also play a complex role in T and B-cell antigen receptor signaling.

Storage

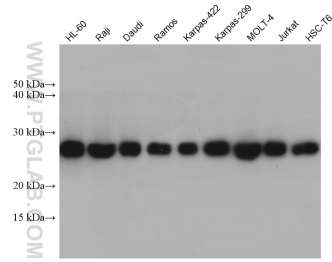
Storage:
Store at -80°C.

Storage Buffer:
PBS Only

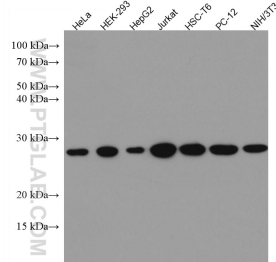
For technical support and original validation data for this product please contact:
T: 1 (888) 4PTGLAB (1-888-478-4522) (toll free in USA), or 1(312) 455-8498 (outside USA) E: proteintech@ptglab.com
W: ptglab.com

This product is exclusively available under Proteintech Group brand and is not available to purchase from any other manufacturer.

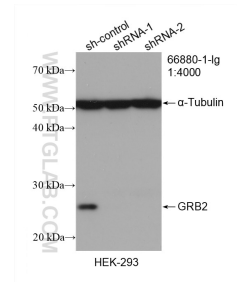
Selected Validation Data



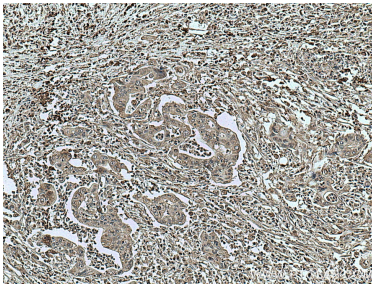
Various lysates were subjected to SDS PAGE followed by western blot with 66880-1-Ig (GRB2 antibody) at dilution of 1:10000 incubated at room temperature for 1.5 hours. This data was developed using the same antibody clone with 66880-1-PBS in a different storage buffer formulation.



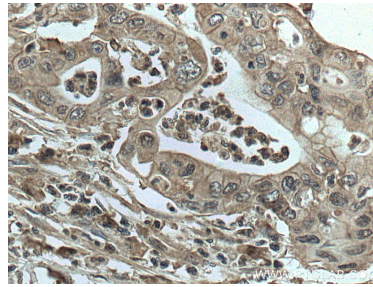
Various lysates were subjected to SDS PAGE followed by western blot with 66880-1-Ig (GRB2 antibody) at dilution of 1:5000 incubated at room temperature for 1.5 hours. This data was developed using the same antibody clone with 66880-1-PBS in a different storage buffer formulation.



WB result of GRB2 antibody (66880-1-Ig; 1:4000; incubated at room temperature for 1.5 hours) with sh-Control and sh-GRB2 transfected HEK-293 cells. This data was developed using the same antibody clone with 66880-1-PBS in a different storage buffer formulation.



Immunohistochemical analysis of paraffin-embedded human pancreas cancer tissue slide using 66880-1-Ig (GRB2 antibody) at dilution of 1:500 (under 10x lens. Heat mediated antigen retrieval with Tris-EDTA buffer (pH 9.0). This data was developed using the same antibody clone with 66880-1-PBS in a different storage buffer formulation.



Immunohistochemical analysis of paraffin-embedded human pancreas cancer tissue slide using 66880-1-Ig (GRB2 antibody) at dilution of 1:500 (under 40x lens. Heat mediated antigen retrieval with Tris-EDTA buffer (pH 9.0). This data was developed using the same antibody clone with 66880-1-PBS in a different storage buffer formulation.