

For Research Use Only

G6PC Monoclonal antibody, PBS Only (Detector)

Catalog Number: 66860-1-PBS



Basic Information

Catalog Number: 66860-1-PBS	GenBank Accession Number: BC130478	Purification Method: Protein A purification
Size: 100ug, Concentration: 1 mg/ml by Nanodrop;	GeneID (NCBI): 2538	CloneNo.: 1E11A5
Source: Mouse	UNIPROT ID: P35575	
Isotype: IgG1	Full Name: glucose-6-phosphatase, catalytic subunit	
Immunogen Catalog Number: AG17839	Calculated MW: 357 aa, 40 kDa	
	Observed MW: 37-42 kDa	

Applications

Tested Applications:
WB, IHC, Cytometric bead array, Indirect ELISA

Species Specificity:
human

Product Information

66860-1-PBS targets G6PC as part of a matched antibody pair:

MP50826-2: 66860-4-PBS capture and 66860-1-PBS detection (validated in Cytometric bead array)

Unconjugated mouse monoclonal antibody pair in PBS only (BSA and azide free) storage buffer at a concentration of 1 mg/mL, ready for conjugation.

This conjugation ready format makes antibodies ideal for use in many applications including: ELISAs, multiplex assays requiring matched pairs, mass cytometry, and multiplex imaging applications. Antibody use should be optimized by the end user for each application and assay.

Background Information

Glucose-6-phosphatase- α (G6PC) is a key enzyme in glucose homeostasis that catalyzes the hydrolysis of glucose-6-phosphate to glucose and phosphate in the terminal step of gluconeogenesis and glycogenolysis. G6PC activity is restricted to the liver, the kidney cortex and the small intestine and confers on these three organs the capacity to release glucose into the systemic circulation (PMID: 21983240). The encoded enzyme is anchored to the ER by nine transmembrane helices with the amino (N)-terminus in the lumen and the carboxyl (C)-terminus in the cytoplasm (PMID: 15542400).

Storage

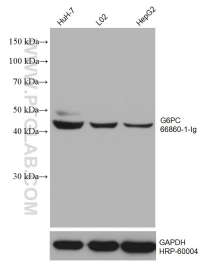
Storage:
Store at -80°C.

Storage Buffer:
PBS Only

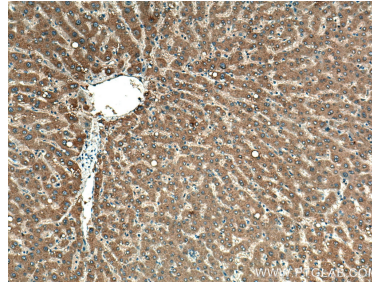
For technical support and original validation data for this product please contact:
T: 1 (888) 4PTGLAB (1-888-478-4522) (toll free in USA), or 1(312) 455-8498 (outside USA)
E: proteintech@ptglab.com
W: ptglab.com

This product is exclusively available under Proteintech Group brand and is not available to purchase from any other manufacturer.

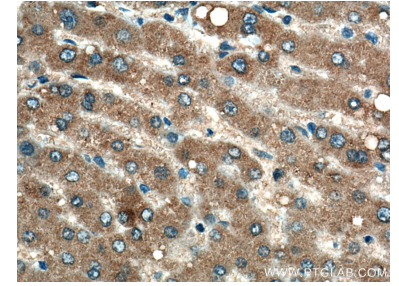
Selected Validation Data



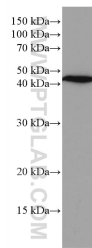
Various lysates were subjected to SDS PAGE followed by western blot with 66860-1-Ig (G6PC antibody) at dilution of 1:5000 incubated at room temperature for 1.5 hours. The membrane was stripped and reblotted with HRP-conjugated GAPDH Monoclonal antibody (HRP-60004) as loading control. This data was developed using the same antibody clone with 66860-1-PBS in a different storage buffer formulation.



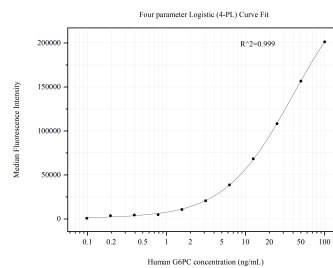
Immunohistochemical analysis of paraffin-embedded human liver tissue slide using 66860-1-Ig (G6PC antibody) at dilution of 1:200 (under 10x lens). Heat mediated antigen retrieval with Tris-EDTA buffer (pH 9.0). This data was developed using the same antibody clone with 66860-1-PBS in a different storage buffer formulation.



Immunohistochemical analysis of paraffin-embedded human liver tissue slide using 66860-1-Ig (G6PC antibody) at dilution of 1:200 (under 40x lens). Heat mediated antigen retrieval with Tris-EDTA buffer (pH 9.0). This data was developed using the same antibody clone with 66860-1-PBS in a different storage buffer formulation.



HuH-7 cells were subjected to SDS PAGE followed by western blot with 66860-1-Ig (G6PC antibody) at dilution of 1:2000 incubated at room temperature for 1.5 hours. This data was developed using the same antibody clone with 66860-1-PBS in a different storage buffer formulation.



Cytometric bead array standard curve of MP50826-2, G6PC Monoclonal Matched Antibody Pair, PBS Only. Capture antibody: 66860-4-PBS. Detection antibody: 66860-1-PBS. Standard: Ag17839. Range: 0.098-100 ng/mL.