

For Research Use Only

G6PC Monoclonal antibody

Catalog Number: 66860-1-Ig **4 Publications**



Basic Information

Catalog Number: 66860-1-Ig	GenBank Accession Number: BC130478	Purification Method: Protein A purification
Size: 150ul , Concentration: 2000 ug/ml by Nanodrop and 1000 ug/ml by Bradford method using BSA as the standard;	GeneID (NCBI): 2538	CloneNo.: 1E11A5
Source: Mouse	UNIPROT ID: P35575	Recommended Dilutions: WB 1:1000-1:5000 IHC 1:50-1:500
Isotype: IgG1	Full Name: glucose-6-phosphatase, catalytic subunit	
Immunogen Catalog Number: AG17839	Calculated MW: 357 aa, 40 kDa	
	Observed MW: 37-42 kDa	

Applications

Tested Applications: WB, IHC, ELISA	Positive Controls: WB : HuH-7 cells, L02 cells, HepG2 cells
Cited Applications: WB	IHC : human liver tissue, human breast cancer tissue
Species Specificity: human	
Cited Species: human	
Note-IHC: suggested antigen retrieval with TE buffer pH 9.0; (*) Alternatively, antigen retrieval may be performed with citrate buffer pH 6.0	

Background Information

Glucose-6-phosphatase- α (G6PC) is a key enzyme in glucose homeostasis that catalyzes the hydrolysis of glucose-6-phosphate to glucose and phosphate in the terminal step of gluconeogenesis and glycogenolysis. G6PC activity is restricted to the liver, the kidney cortex and the small intestine and confers on these three organs the capacity to release glucose into the systemic circulation (PMID: 21983240). The encoded enzyme is anchored to the ER by nine transmembrane helices with the amino (N)-terminus in the lumen and the carboxyl (C)-terminus in the cytoplasm (PMID: 15542400).

Notable Publications

Author	Pubmed ID	Journal	Application
Sa Yang	35873595	Front Pharmacol	WB
Jianglan Long	39560906	J Endocrinol Invest	WB
Shuwei Hu	39047111	Sci Adv	WB

Storage

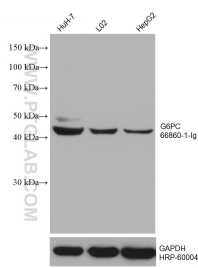
Storage:
Store at -20°C. Stable for one year after shipment.
Storage Buffer:
PBS with 0.02% sodium azide and 50% glycerol pH 7.3.
Aliquoting is unnecessary for -20°C storage

*** 20ul sizes contain 0.1% BSA

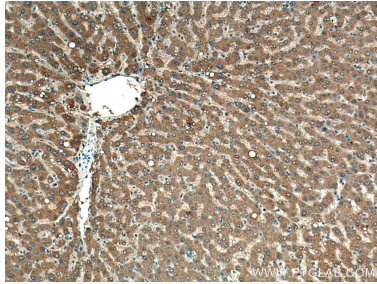
For technical support and original validation data for this product please contact:
T: 1 (888) 4PTGLAB (1-888-478-4522) (toll free in USA), or 1(312) 455-8498 (outside USA)
E: proteintech@ptglab.com
W: ptglab.com

This product is exclusively available under Proteintech Group brand and is not available to purchase from any other manufacturer.

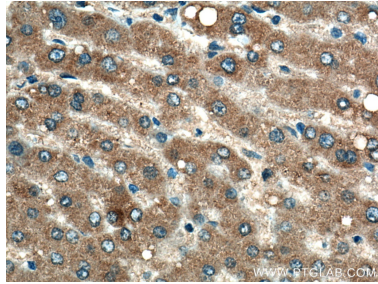
Selected Validation Data



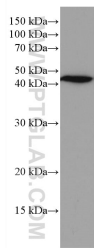
Various lysates were subjected to SDS PAGE followed by western blot with 66860-1-Ig (G6PC antibody) at dilution of 1:5000 incubated at room temperature for 1.5 hours. The membrane was stripped and reblotted with HRP-conjugated GAPDH Monoclonal antibody (HRP-60004) as loading control.



Immunohistochemical analysis of paraffin-embedded human liver tissue slide using 66860-1-Ig (G6PC antibody) at dilution of 1:200 (under 10x lens. Heat mediated antigen retrieval with Tris-EDTA buffer (pH 9.0).



Immunohistochemical analysis of paraffin-embedded human liver tissue slide using 66860-1-Ig (G6PC antibody) at dilution of 1:200 (under 40x lens. Heat mediated antigen retrieval with Tris-EDTA buffer (pH 9.0).



HuH-7 cells were subjected to SDS PAGE followed by western blot with 66860-1-Ig (G6PC antibody) at dilution of 1:2000 incubated at room temperature for 1.5 hours.