

For Research Use Only

ACVRL1 Monoclonal antibody, PBS Only



Catalog Number: 66857-1-PBS

Basic Information

Catalog Number:

66857-1-PBS

Size:

100ug, Concentration: 1 mg/ml by Nanodrop;

Source:

Mouse

Isotype:

IgG1

Immunogen Catalog Number:

AG6446

GenBank Accession Number:

BC042637

GeneID (NCBI):

94

UNIPROT ID:

P37023

Full Name:

activin A receptor type II-like 1

Calculated MW:

56 kDa

Observed MW:

56 kDa, 63 kDa

Purification Method:

Protein G purification

CloneNo.:

2E11B10

Applications

Tested Applications:

WB, IHC, Indirect ELISA

Species Specificity:

Human, Mouse

Background Information

ACVRL1 (also known as ALK1) is a type I cell-surface receptor for the TGF-beta superfamily of ligands. It shares with other type I receptors a high degree of similarity in serine-threonine kinase subdomains, a glycine- and serine-rich region (called the GS domain) preceding the kinase domain, and a short C-terminal tail. ACVRL1 is highly expressed in endothelial cells and has a critical role in the control of blood vessel development and repair (PMID: 8640225). Mutations in the ACVRL1 gene are associated with hemorrhagic telangiectasia type 2.

Storage

Storage:

Store at -80°C.

Storage Buffer:

PBS Only

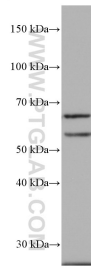
For technical support and original validation data for this product please contact:

T: 1 (888) 4PTGLAB (1-888-478-4522) (toll free in USA), or 1(312) 455-8498 (outside USA)

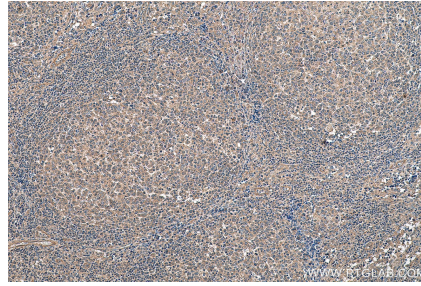
E: proteintech@ptglab.com
W: ptglab.com

This product is exclusively available under Proteintech Group brand and is not available to purchase from any other manufacturer.

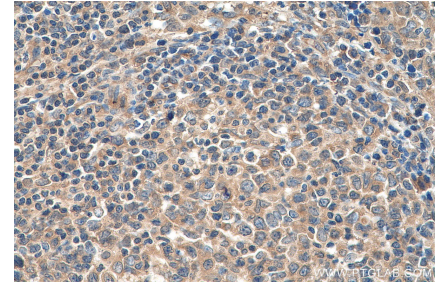
Selected Validation Data



HUVEC cells were subjected to SDS PAGE followed by western blot with 66857-1-Ig (ACVRL1 antibody) at dilution of 1:3000 incubated at room temperature for 1.5 hours. This data was developed using the same antibody clone with 66857-1-PBS in a different storage buffer formulation.



Immunohistochemical analysis of paraffin-embedded human lymphoma tissue slide using 66857-1-Ig (ACVRL1 antibody) at dilution of 1:300 (under 10x lens). Heat mediated antigen retrieval with Tris-EDTA buffer (pH 9.0). This data was developed using the same antibody clone with 66857-1-PBS in a different storage buffer formulation.



Immunohistochemical analysis of paraffin-embedded human lymphoma tissue slide using 66857-1-Ig (ACVRL1 antibody) at dilution of 1:300 (under 40x lens). Heat mediated antigen retrieval with Tris-EDTA buffer (pH 9.0). This data was developed using the same antibody clone with 66857-1-PBS in a different storage buffer formulation.