

For Research Use Only

# Phospho-RIPK1 (Ser161) Monoclonal antibody, PBS Only

Catalog Number: 66854-1-PBS



## Basic Information

Catalog Number:

66854-1-PBS

Size:

100ug, Concentration: 1mg/ml by Nanodrop;

Source:

Mouse

Isotype:

IgG1

GenBank Accession Number:

NM\_003804

GeneID (NCBI):

8737

UNIPROT ID:

Q13546

Full Name:

receptor (TNFRSF)-interacting serine-threonine kinase 1

Calculated MW:

76 kDa

Observed MW:

74 kDa, 45 kDa

Purification Method:

Protein A purification

CloneNo.:

1B2G1

## Applications

Tested Applications:

WB, IHC, IF/ICC, FC (Intra), ELISA

Species Specificity:

human

## Background Information

RIPK1 (Receptor-interacting serine/threonine-protein kinase 1) is primarily involved in mediating TNF-R1-induced cell activation, apoptosis and necroptosis and belongs to a novel class of kinases that function in cell survival and cell death mechanisms (PMID:22685397). It has 2 isoforms produced by alternative splicing. It also can exist as the protein with lower molecular weight about 25kd and 45kd in HAEC and HUVEC (PMID:22685397).

## Storage

Storage:

Store at -80°C.

Storage Buffer:

PBS Only

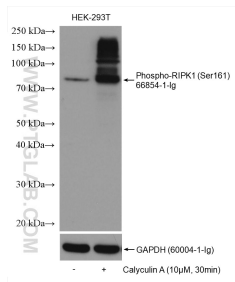
For technical support and original validation data for this product please contact:

T: 1 (888) 4PTGLAB (1-888-478-4522) (toll free in USA), or 1(312) 455-8498 (outside USA)

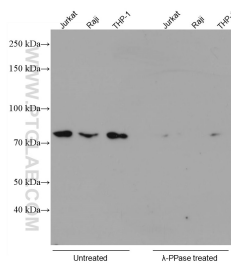
E: [proteintech@ptglab.com](mailto:proteintech@ptglab.com)  
W: [ptglab.com](http://ptglab.com)

This product is exclusively available under Proteintech Group brand and is not available to purchase from any other manufacturer.

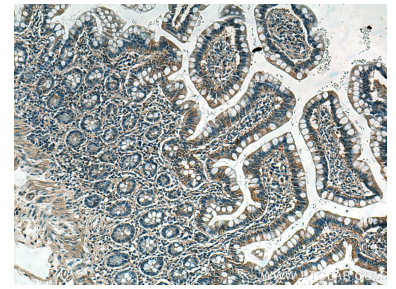
## Selected Validation Data



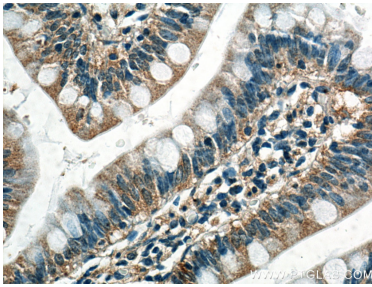
Non-treated HEK-293T and Calyculin A treated HEK-293T cells were subjected to SDS PAGE followed by western blot with 66854-1-Ig (Phospho-RIPK1 (Ser161) antibody) at dilution of 1:5000 incubated at room temperature for 1.5 hours. The membrane was stripped and re-blotted with GAPDH antibody as loading control. This data was developed using the same antibody clone with 66854-1-PBS in a different storage buffer formulation.



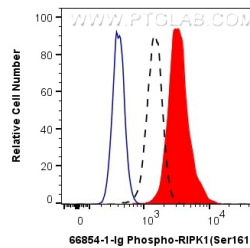
Various lysates were subjected to SDS PAGE followed by western blot with 66854-1-Ig (Phospho-RIPK1 (Ser161) antibody) at dilution of 1:5000 incubated at room temperature for 1.5 hours. The membrane was untreated (left) or treated with Lambda Protein Phosphatase ( $\lambda$ -PPase, 500U, right) at 37°C for 1 hours before blocking. This data was developed using the same antibody clone with 66854-1-PBS in a different storage buffer formulation.



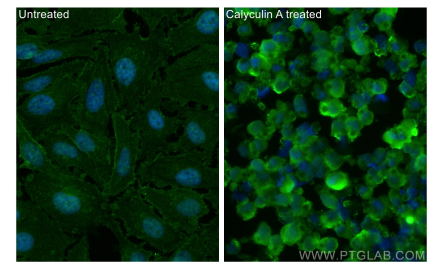
Immunohistochemical analysis of paraffin-embedded human small intestine tissue slide using 66854-1-Ig (RIPK1 phospho S161 antibody) at dilution of 1:500 (under 10x lens). Heat mediated antigen retrieval with Tris-EDTA buffer (pH 9.0). This data was developed using the same antibody clone with 66854-1-PBS in a different storage buffer formulation.



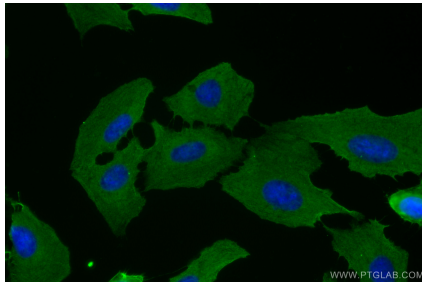
Immunohistochemical analysis of paraffin-embedded human small intestine tissue slide using 66854-1-Ig (RIPK1 phospho S161 antibody) at dilution of 1:500 (under 40x lens). Heat mediated antigen retrieval with Tris-EDTA buffer (pH 9.0). This data was developed using the same antibody clone with 66854-1-PBS in a different storage buffer formulation.



$1 \times 10^6$  Calyculin A treated HEK-293T cells were intracellularly stained with 0.13  $\mu$ g Anti-Human Phospho-RIPK1 (Ser161) (66854-1-Ig, Clone:1B2G1) labeled with FlexAble Coralite® Plus 555 Antibody Labeling Kit for Mouse IgG1 (KFA022). Cells were fixed with 4% PFA and permeabilized with 90% MeOH. This data was developed using the same antibody clone with 66854-1-PBS in a different storage buffer formulation.



Immunofluorescent analysis of (4% PFA) fixed Calyculin A treated HeLa cells using Phospho-RIPK1 (Ser161) antibody (66854-1-Ig, Clone: 1B2G1) at dilution of 1:400 and Multi-rAb CoraLite® Plus 488-Goat Anti-Mouse Recombinant Secondary Antibody (H+L) (RGAM002). This data was developed using the same antibody clone with 66854-1-PBS in a different storage buffer formulation.



Immunofluorescent analysis of (-20°C Ethanol) fixed U2OS cells using Phospho-RIPK1 (Ser161) antibody (66854-1-Ig, Clone: 1B2G1) at dilution of 1:800 and CoraLite®488-Conjugated AffiniPure Goat Anti-Mouse IgG(H+L) (SA00013-1). This data was developed using the same antibody clone with 66854-1-PBS in a different storage buffer formulation.