

For Research Use Only

SMO Monoclonal antibody, PBS Only

Catalog Number: 66851-2-PBS



Basic Information

Catalog Number: 66851-2-PBS	GenBank Accession Number: BC009989	Purification Method: Protein A purification
Size: 100ug, Concentration: 1 mg/ml by Nanodrop;	GeneID (NCBI): 6608	CloneNo.: 2A11A10
Source: Mouse	UNIPROT ID: Q99835	
Isotype: IgG1	Full Name: smoothened homolog (Drosophila)	
Immunogen Catalog Number: AG25861	Calculated MW: 787 aa, 86 kDa	

Applications

Tested Applications:
IF, Indirect ELISA

Species Specificity:
Human, Canine

Background Information

Smoothened (SMO) is a G protein-coupled receptor that is a component of the hedgehog (Hh) signaling pathway and is conserved from flies to humans. The Hh pathway plays central roles in animal development and stem-cell function. Defects in Hh signalling lead to birth defects and cancer in humans. Expressed on the primary cilium, SMO interacts with the patched protein, a receptor for Hh proteins.

Storage

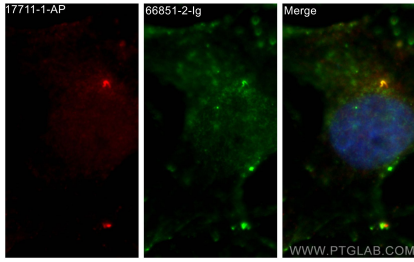
Storage:
Store at -80°C.

Storage Buffer:
PBS Only

For technical support and original validation data for this product please contact:
T: 1 (888) 4PTGLAB (1-888-478-4522) (toll free in USA), or 1(312) 455-8498 (outside USA) E: proteintech@ptglab.com
W: ptglab.com

This product is exclusively available under Proteintech Group brand and is not available to purchase from any other manufacturer.

Selected Validation Data



Immunofluorescent analysis of (4% PFA) fixed MDCK cells using SMO antibody (66851-2-Ig, Clone: 2A11A10) at dilution of 1:800 and CoraLite®488-Conjugated AffiniPure Goat Anti-Mouse IgG(H+L), ARL13B antibody (17711-1-AP, red). This data was developed using the same antibody clone with 66851-2-PBS in a different storage buffer formulation.