

For Research Use Only

# CPLX2 Monoclonal antibody, PBS Only



Catalog Number: 66849-1-PBS

## Basic Information

<b>Catalog Number:</b> 66849-1-PBS	<b>GenBank Accession Number:</b> BC093706	<b>Purification Method:</b> Protein G purification
<b>Size:</b> 100ug , Concentration: 1 mg/ml by Nanodrop;	<b>GeneID (NCBI):</b> 10814	<b>CloneNo.:</b> 1B2A11
<b>Source:</b> Mouse	<b>UNIPROT ID:</b> Q6PUV4	
<b>Isotype:</b> IgG1	<b>Full Name:</b> complexin 2	
<b>Immunogen Catalog Number:</b> AG27949	<b>Calculated MW:</b> 134 aa, 15 kDa	
	<b>Observed MW:</b> 18-20 kDa	

## Applications

**Tested Applications:**  
WB, IHC, Indirect ELISA

**Species Specificity:**  
Human, Mouse, Rat, pig

## Background Information

Complexins are soluble proteins that regulate the activity of soluble N-ethylmaleimide-sensitive factor attachment protein receptor (SNARE) complexes necessary for vesicle fusion. Neuronal specific complexin 1 (CPLX1) has inhibitory and stimulatory effects on exocytosis by clamping trans-SNARE complexes in a prefusion state and promoting conformational changes to facilitate membrane fusion following cell stimulation. Complexin2 (CPLX2) is a pre-synaptic protein believed to regulate neurotransmitter release from pre-synaptic terminals, it is downregulated in schizophrenic patients suffering from depression, animal models of depression and neurological disorders such as Huntington's disease in which depression is a major symptom.

## Storage

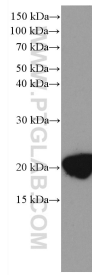
**Storage:**  
Store at -80°C.

**Storage Buffer:**  
PBS Only

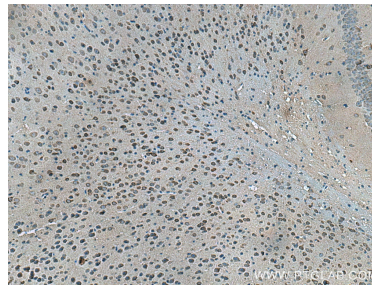
For technical support and original validation data for this product please contact:  
T: 1 (888) 4PTGLAB (1-888-478-4522) (toll free in USA), or 1(312) 455-8498 (outside USA)      E: proteintech@ptglab.com  
W: ptglab.com

This product is exclusively available under Proteintech Group brand and is not available to purchase from any other manufacturer.

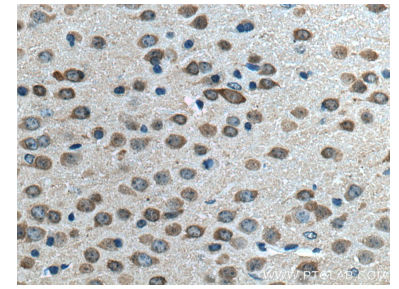
## Selected Validation Data



mouse brain tissue were subjected to SDS PAGE followed by western blot with 66849-1-Ig (CPLX2 antibody) at dilution of 1:1500 incubated at room temperature for 1.5 hours. This data was developed using the same antibody clone with 66849-1-PBS in a different storage buffer formulation.



Immunohistochemical analysis of paraffin-embedded mouse brain tissue slide using 66849-1-Ig (CPLX2 antibody) at dilution of 1:500 (under 10x lens). Heat mediated antigen retrieval with Tris-EDTA buffer (pH 9.0). This data was developed using the same antibody clone with 66849-1-PBS in a different storage buffer formulation.



Immunohistochemical analysis of paraffin-embedded mouse brain tissue slide using 66849-1-Ig (CPLX2 antibody) at dilution of 1:500 (under 40x lens). Heat mediated antigen retrieval with Tris-EDTA buffer (pH 9.0). This data was developed using the same antibody clone with 66849-1-PBS in a different storage buffer formulation.