

For Research Use Only

# TFPI Monoclonal antibody, PBS Only

Catalog Number: 66842-1-PBS



## Basic Information

<b>Catalog Number:</b> 66842-1-PBS	<b>GenBank Accession Number:</b> BC015514	<b>Purification Method:</b> Protein A purification
<b>Size:</b> 100ug , Concentration: 1 mg/ml by Nanodrop;	<b>GeneID (NCBI):</b> 7035	<b>CloneNo.:</b> 1B12F11
<b>Source:</b> Mouse	<b>UNIPROT ID:</b> P10646	
<b>Isotype:</b> IgG2a	<b>Full Name:</b> tissue factor pathway inhibitor (lipoprotein-associated coagulation inhibitor)	
<b>Immunogen Catalog Number:</b> AG14980	<b>Calculated MW:</b> 251aa,29 kDa; 304aa,35 kDa	
	<b>Observed MW:</b> 35-38 kDa	

## Applications

**Tested Applications:**  
WB, Indirect ELISA

**Species Specificity:**  
Human

## Background Information

Tissue factor pathway inhibitor (TFPI) is a critical anticoagulant protein present in endothelium and platelets. TFPI is produced as two major isoforms in humans, TFPIa and TFPIb that result from alternative splicing. The TFPIb isoform localizes to the endothelium surface where it is a potent inhibitor of tissue factor-factor VIIa complexes that initiate blood coagulation. The TFPIa isoform is present in platelets. TFPI is a Kunitz-type serine protease inhibitor that exerts anticoagulant activity by blocking early procoagulant stimuli. TFPI can enhance anti-thrombotic treatment in sepsis, inflammatory diseases, and cardiovascular diseases.

## Storage

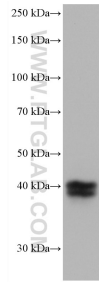
**Storage:**  
Store at -80°C.

**Storage Buffer:**  
PBS Only

For technical support and original validation data for this product please contact:  
T: 1 (888) 4PTGLAB (1-888-478-4522) (toll free in USA), or 1(312) 455-8498 (outside USA)      E: proteintech@ptglab.com  
W: ptglab.com

This product is exclusively available under Proteintech Group brand and is not available to purchase from any other manufacturer.

## Selected Validation Data



human placenta tissue were subjected to SDS PAGE followed by western blot with 66842-1-Ig (TFPI antibody) at dilution of 1:2000 incubated at room temperature for 1.5 hours. This data was developed using the same antibody clone with 66842-1-PBS in a different storage buffer formulation.