

For Research Use Only

IRF5 Monoclonal antibody, PBS Only

Catalog Number: 66835-1-PBS



Basic Information

Catalog Number: 66835-1-PBS	GenBank Accession Number: BC004201	Purification Method: Protein G purification
Size: 100ug , Concentration: 1 mg/ml by Nanodrop;	GeneID (NCBI): 3663	CloneNo.: 3A4A10
Source: Mouse	UNIPROT ID: Q13568	
Isotype: IgG1	Full Name: interferon regulatory factor 5	
Immunogen Catalog Number: AG5442	Calculated MW: 56 kDa	
	Observed MW: 56 kDa	

Applications

Tested Applications:
WB, Indirect ELISA

Species Specificity:
Human, mouse

Background Information

IRF5, also named as SLEB10, contains one IRF tryptophan pentad repeat DNA-binding domain and belongs to the IRF family. It is a transcription factor involved in the induction of interferons IFNA and INF β and inflammatory cytokines upon virus infection. It is activated by TLR7 or TLR8 signaling. Genetic variations in IRF5 are associated with susceptibility to inflammatory bowel disease type 14 (IBD14) and systemic lupus erythematosus type 10 (SLEB10). IRF5 is also used as M1 macrophage lineage marker. Alternative splice variant encoding different isoforms exist.

Storage

Storage:
Store at -80°C.

Storage Buffer:
PBS Only

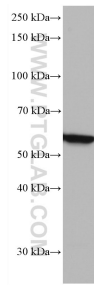
For technical support and original validation data for this product please contact:

T: 1 (888) 4PTGLAB (1-888-478-4522) (toll free in USA), or 1(312) 455-8498 (outside USA)

E: proteintech@ptglab.com
W: ptglab.com

This product is exclusively available under Proteintech Group brand and is not available to purchase from any other manufacturer.

Selected Validation Data



A549 cells were subjected to SDS PAGE followed by western blot with 66835-1-Ig (IRF5 antibody) at dilution of 1:3000 incubated at room temperature for 1.5 hours. This data was developed using the same antibody clone with 66835-1-PBS in a different storage buffer formulation.