

For Research Use Only

CEP250,C-NAP1 Monoclonal antibody, PBS Only



Catalog Number:66814-1-PBS

Basic Information

Catalog Number: 66814-1-PBS	GenBank Accession Number: BC001433	Purification Method: Protein A purification
Size: 100ug , Concentration: 1 mg/ml by Nanodrop;	GeneID (NCBI): 11190	CloneNo.: 2G12D12
Source: Mouse	UNIPROT ID: Q9BV73	
Isotype: IgG1	Full Name: centrosomal protein 250kDa	
Immunogen Catalog Number: AG5925	Calculated MW: 281 kDa	
	Observed MW: 280 kDa	

Applications

Tested Applications:
WB, IF, ELISA

Species Specificity:
Human

Background Information

CEP250, also known as C-Nap1, is a coiled-coil protein that localizes to the proximal ends of mother and daughter centrioles. It is required for centriole-centriole cohesion during interphase of the cell cycle. It dissociates from the centrosomes when parental centrioles separate at the beginning of mitosis. The protein associates with and is phosphorylated by NIMA-related kinase 2, which is also associated with the centrosome.

Storage

Storage:
Store at -20°C. Stable for one year after shipment.

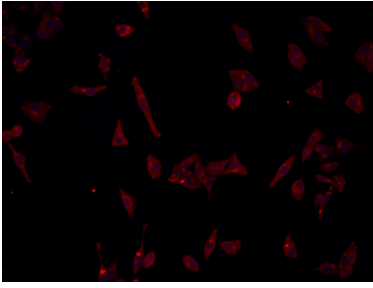
Storage Buffer:
PBS only

Aliquoting is unnecessary for -20°C storage

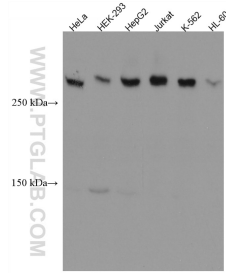
For technical support and original validation data for this product please contact:
T: 1 (888) 4PTGLAB (1-888-478-4522) (toll free in USA), or 1(312) 455-8498 (outside USA) E: proteintech@ptglab.com
W: ptglab.com

This product is exclusively available under Proteintech Group brand and is not available to purchase from any other manufacturer.

Selected Validation Data



Immunofluorescent analysis of (4% PFA) fixed HepG2 cells using CEP250,C-NAP1 antibody (66814-1-Ig, Clone: 2G12D12) at dilution of 1:773 and Multi- γ Ab CoraLite® Plus 594-Goat Anti-Mouse Recombinant Secondary Antibody (H+L) (Cat.NO. RGAM004). This data was developed using the same antibody clone with 66814-1-PBS in a different storage buffer formulation.



Various lysates were subjected to SDS PAGE followed by western blot with 66814-1-Ig (CEP250,C-NAP1 antibody) at dilution of 1:4000 incubated at room temperature for 1.5 hours. This data was developed using the same antibody clone with 66814-1-PBS in a different storage buffer formulation.