

For Research Use Only

GCLM Monoclonal antibody, PBS Only

Catalog Number: 66808-1-PBS

Featured Product



Basic Information

Catalog Number:

66808-1-PBS

Size:

100ug, Concentration: 1mg/ml by Nanodrop;

Source:

Mouse

Isotype:

IgG2b

Immunogen Catalog Number:

AG5497

GenBank Accession Number:

BC041809

GeneID (NCBI):

2730

UNIPROT ID:

P48507

Full Name:

glutamate-cysteine ligase, modifier subunit

Calculated MW:

31 kDa

Observed MW:

31 kDa

Purification Method:

Protein A purification

CloneNo.:

1A5A4

Applications

Tested Applications:

WB, IHC, Indirect ELISA

Species Specificity:

human, mouse, rat

Storage

Storage:

Store at -80°C.

Storage Buffer:

PBS Only

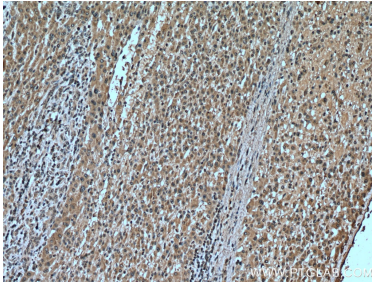
For technical support and original validation data for this product please contact:

T: 1 (888) 4PTGLAB (1-888-478-4522) (toll free in USA), or 1(312) 455-8498 (outside USA)

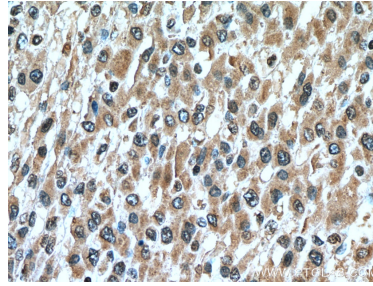
E: proteintech@ptglab.com
W: ptglab.com

This product is exclusively available under Proteintech Group brand and is not available to purchase from any other manufacturer.

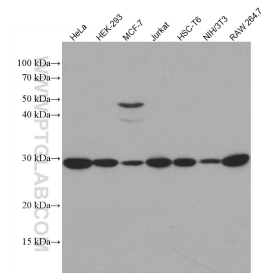
Selected Validation Data



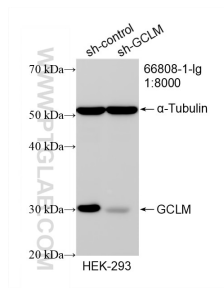
Immunohistochemical analysis of paraffin-embedded human liver cancer tissue slide using 66808-1-Ig (GCLM antibody) at dilution of 1:200 (under 10x lens). Heat mediated antigen retrieval with Tris-EDTA buffer (pH 9.0). This data was developed using the same antibody clone with 66808-1-PBS in a different storage buffer formulation.



Immunohistochemical analysis of paraffin-embedded human liver cancer tissue slide using 66808-1-Ig (GCLM antibody) at dilution of 1:200 (under 40x lens). Heat mediated antigen retrieval with Tris-EDTA buffer (pH 9.0). This data was developed using the same antibody clone with 66808-1-PBS in a different storage buffer formulation.



Various lysates were subjected to SDS PAGE followed by western blot with 66808-1-Ig (GCLM antibody) at dilution of 1:5000 incubated at room temperature for 1.5 hours. This data was developed using the same antibody clone with 66808-1-PBS in a different storage buffer formulation.



WB result of GCLM antibody (66808-1-Ig; 1:8000; incubated at room temperature for 1.5 hours) with sh-Control and sh-GCLM transfected HEK-293 cells. This data was developed using the same antibody clone with 66808-1-PBS in a different storage buffer formulation.