

For Research Use Only

# PABPN1 Monoclonal antibody, PBS Only



Catalog Number: 66807-1-PBS

Featured Product

## Basic Information

<b>Catalog Number:</b> 66807-1-PBS	<b>GenBank Accession Number:</b> BC010939	<b>Purification Method:</b> Protein G purification
<b>Size:</b> 100ug , Concentration: 1 mg/ml by Nanodrop;	<b>GeneID (NCBI):</b> 8106	<b>CloneNo.:</b> 3C12E12
<b>Source:</b> Mouse	<b>UNIPROT ID:</b> Q86U42	
<b>Isotype:</b> IgG1	<b>Full Name:</b> poly(A) binding protein, nuclear 1	
<b>Immunogen Catalog Number:</b> AG27470	<b>Calculated MW:</b> 33 kDa	
	<b>Observed MW:</b> 50-56 kDa	

## Applications

**Tested Applications:**  
WB, IP, IF, IHC, Indirect ELISA

**Species Specificity:**  
Human, Mouse, Rat

## Background Information

Poly(A) Binding Protein Nuclear 1(PABPN1) is one of the isoforms of poly(A) binding protein (PABP) that locating to the nucleus in eukaryotic cells. And PABPN1 plays important role in mRNA stability by regulating of poly-A tail length, mRNA decay and proximal polyadenylation site (PAS) utilization at the 3'-UTR (PMID:23300856). Another report showed that PABPN1 shuttles between the nucleus and the cytoplasm to export poly(A) RNA from the nucleus (PMID:23601051). It is reported that PABPN1 is ubiquitously expressed in almost all tissues, however, mutations in PABPN1 causes Oculopharyngeal Muscular Dystrophy (OPMD) which affected in skeletal muscles specifically. Because of a mild reduction in PABPN1 levels is sufficient to induce muscle wasting (PMID:27152426). Acetylation, Methylation, Phosphoprotein are common post-translational modifications of PABPN1 protein. And 50-55 kDa bands have been reported (PMID: 29939290; 28361972).

## Storage

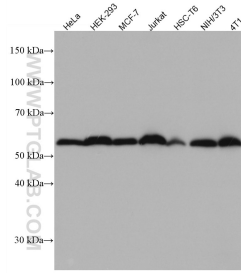
**Storage:**  
Store at -80°C.

**Storage Buffer:**  
PBS Only

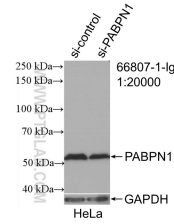
For technical support and original validation data for this product please contact:  
T: 1 (888) 4PTGLAB (1-888-478-4522) (toll free in USA), or 1(312) 455-8498 (outside USA)      E: proteintech@ptglab.com  
W: ptglab.com

This product is exclusively available under Proteintech Group brand and is not available to purchase from any other manufacturer.

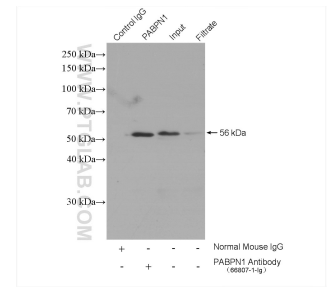
## Selected Validation Data



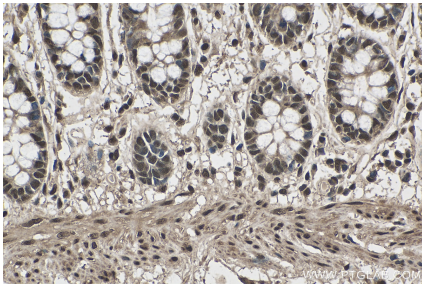
Various lysates were subjected to SDS PAGE followed by western blot with 66807-1-Ig (PABPN1 antibody) at dilution of 1:3000 incubated at room temperature for 1.5 hours. This data was developed using the same antibody clone with 66807-1-PBS in a different storage buffer formulation.



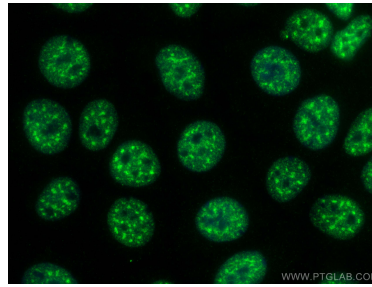
WB result of PABPN1 antibody (66807-1-Ig; 1:20000; incubated at room temperature for 1.5 hours) with sh-Control and sh-PABPN1 transfected HeLa cells. This data was developed using the same antibody clone with 66807-1-PBS in a different storage buffer formulation.



IP result of anti-PABPN1 (IP:66807-1-Ig, 5ug; Detection:66807-1-Ig 1:600) with Jurkat cells lysate 1680 ug. This data was developed using the same antibody clone with 66807-1-PBS in a different storage buffer formulation.



Immunohistochemical analysis of paraffin-embedded human colon tissue slide using 66807-1-Ig (PABPN1 antibody) at dilution of 1:1000 (under 40x lens). Heat mediated antigen retrieval with Tris-EDTA buffer (pH 9.0). This data was developed using the same antibody clone with 66807-1-PBS in a different storage buffer formulation.



Immunofluorescent analysis of (4% PFA) fixed MCF-7 cells using PABPN1 antibody (66807-1-Ig, Clone: 3C12E12) at dilution of 1:2000 and Coralite®488-Conjugated AffiniPure Goat Anti-Mouse IgG(H+L). This data was developed using the same antibody clone with 66807-1-PBS in a different storage buffer formulation.