

For Research Use Only

AQP1 Monoclonal antibody, PBS Only



Catalog Number: 66805-1-PBS

Basic Information

Catalog Number: 66805-1-PBS	GenBank Accession Number: BC022486	Purification Method: Protein G purification
Size: 100ug , Concentration: 1 mg/ml by Nanodrop;	GeneID (NCBI): 358	CloneNo.: 2E5D6
Source: Mouse	UNIPROT ID: P29972	
Isotype: IgG1	Full Name: aquaporin 1 (Colton blood group)	
Immunogen Catalog Number: AG14093	Calculated MW: 269 aa, 29 kDa	
	Observed MW: 28 kDa, 38-40 kDa	

Applications

Tested Applications:
WB, IF, IHC, Indirect ELISA

Species Specificity:
Human, pig

Background Information

AQP1 is a member of aquaporins (AQPs) that are small membrane-spanning proteins facilitating water transport. AQP1 is expressed in most tissues in the mammalian body. Alterations of AQP1 expression have been linked to variety of diseases, including cancer. The predicted molecular weight of AQP1 is around 28 kDa, while highly glycosylated form can also be observed around 40-45 kDa. (1530176)

Storage

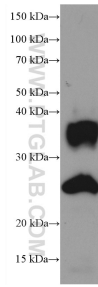
Storage:
Store at -80°C.

Storage Buffer:
PBS Only

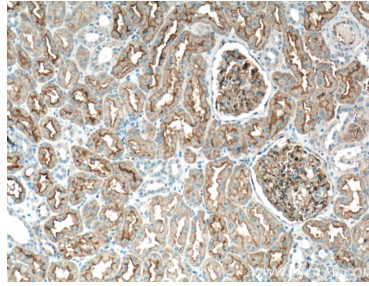
For technical support and original validation data for this product please contact:
T: 1 (888) 4PTGLAB (1-888-478-4522) (toll free in USA), or 1(312) 455-8498 (outside USA) E: proteintech@ptglab.com
W: ptglab.com

This product is exclusively available under Proteintech Group brand and is not available to purchase from any other manufacturer.

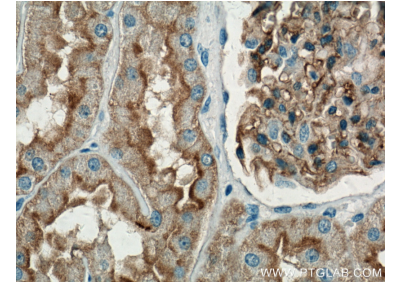
Selected Validation Data



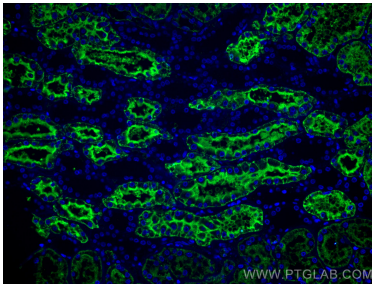
human heart tissue were subjected to SDS PAGE followed by western blot with 66805-1-Ig (AQP1 antibody) at dilution of 1:10000 incubated at room temperature for 1.5 hours. This data was developed using the same antibody clone with 66805-1-PBS in a different storage buffer formulation.



Immunohistochemical analysis of paraffin-embedded human kidney tissue slide using 66805-1-Ig (AQP1 antibody) at dilution of 1:400 (under 10x lens. Heat mediated antigen retrieval with Tris-EDTA buffer (pH 9.0). This data was developed using the same antibody clone with 66805-1-PBS in a different storage buffer formulation.



Immunohistochemical analysis of paraffin-embedded human kidney tissue slide using 66805-1-Ig (AQP1 antibody) at dilution of 1:400 (under 40x lens. Heat mediated antigen retrieval with Tris-EDTA buffer (pH 9.0). This data was developed using the same antibody clone with 66805-1-PBS in a different storage buffer formulation.



Immunofluorescent analysis of (4% PFA) fixed human kidney tissue using AQP1 antibody (66805-1-Ig, Clone: 2E5D6) at dilution of 1:400 and CoraLite®488-Conjugated AffiniPure Goat Anti-Mouse IgG(H+L). This data was developed using the same antibody clone with 66805-1-PBS in a different storage buffer formulation.