

For Research Use Only

Mouse Bcl2 Monoclonal antibody, PBS Only

Catalog Number: 66799-1-PBS



Basic Information

| | | |
|--|---|---|
| Catalog Number: 66799-1-PBS | GenBank Accession Number: NM-009741 | Purification Method: Protein G purification |
| Size: 100ug, Concentration: 1 mg/ml by Nanodrop; | GeneID (NCBI): 12043 | CloneNo.: 1B5B9 |
| Source: Mouse | Full Name: B-cell leukemia/lymphoma 2 | |
| Isotype: IgG1 | Calculated MW: 26 kDa | |
| Immunogen Catalog Number: AG24261 | Observed MW: 26 kDa | |

Applications

Tested Applications:
WB, IF/ICC, Indirect ELISA

Species Specificity:
mouse

Background Information

Bcl2 is a member of the B cell lymphoma 2 protein family. Members of this family regulate cell death in multiple cell types and can have either proapoptotic or antiapoptotic activities. The protein encoded by this gene inhibits mitochondrial-mediated apoptosis. This protein is an integral outer mitochondrial membrane protein that functions as part of signaling pathway that controls mitochondrial permeability in response to apoptotic stimuli. This protein may also play a role in neuron cell survival and autophagy. Abnormal expression and chromosomal translocations of this gene are associated with cancer progression in numerous tissues.

Storage

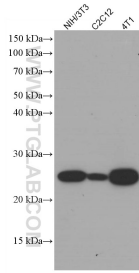
Storage:
Store at -80°C.

Storage Buffer:
PBS Only

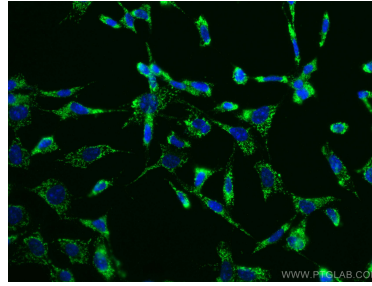
For technical support and original validation data for this product please contact:
T: 1 (888) 4PTGLAB (1-888-478-4522) (toll free in USA), or 1(312) 455-8498 (outside USA) E: proteintech@ptglab.com
W: ptglab.com

This product is exclusively available under Proteintech Group brand and is not available to purchase from any other manufacturer.

Selected Validation Data



Various lysates were subjected to SDS PAGE followed by western blot with 66799-1-Ig (Bcl2 antibody) at dilution of 1:1400 incubated at room temperature for 1.5 hours. This data was developed using the same antibody clone with 66799-1-PBS in a different storage buffer formulation.



Immunofluorescent analysis of (-20°C Ethanol) fixed NIH/3T3 cells using Bcl2 antibody (66799-1-Ig, Clone: 1B5B9) at dilution of 1:100 and CoraLite®488-Conjugated AffiniPure Goat Anti-Mouse IgG(H+L). This data was developed using the same antibody clone with 66799-1-PBS in a different storage buffer formulation.