

For Research Use Only

SOCS3 Monoclonal antibody, PBS Only



Catalog Number: 66797-1-PBS

Featured Product

Basic Information

Catalog Number:

66797-1-PBS

Size:

100ug, Concentration: 1 mg/ml by Nanodrop;

Source:

Mouse

Isotype:

IgG1

Immunogen Catalog Number:

AG5386

GenBank Accession Number:

BC060858

GeneID (NCBI):

9021

UNIPROT ID:

O14543

Full Name:

suppressor of cytokine signaling 3

Calculated MW:

25 kDa

Observed MW:

25 kDa

Purification Method:

Protein A purification

CloneNo.:

1G2B12

Applications

Tested Applications:

WB, IF, IHC, Indirect ELISA

Species Specificity:

Human, mouse

Background Information

Suppressor of cytokine signaling 3 (SOCS3) is a member of SOCS family that these proteins induced to attenuate cytokine signal transduction in response to signals from a diverse range of cytokines and growth factors. SOCS3 is a negative regulatory protein that inhibits signaling induced by IL-6 via preventing JAK mediated activation of STAT3. However SOCS3 can positively regulate the ERK-MAPK pathway, inhibit the NF-kB pathway (PMID:26429311,25035930). In addition, SOCS3 brings a great impact on immune responses by inhibiting signaling stimulus, such as LPS, type I and type II IFNs, and IL-12. SOCS3 is widely expressed in heart, placenta, skeletal muscle, peripheral blood leukocytes, fetal and adult lung, and fetal liver and kidney (PMID: 22961088). Dysregulation of SOCS3 functions can cause a variety of diseases, including allergy, autoimmune diseases, inflammation and cancer (PMID:26429311).

Storage

Storage:

Store at -80°C.

Storage Buffer:

PBS Only

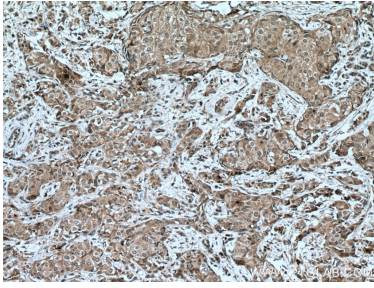
For technical support and original validation data for this product please contact:

T: 1 (888) 4PTGLAB (1-888-478-4522) (toll free in USA), or 1(312) 455-8498 (outside USA)

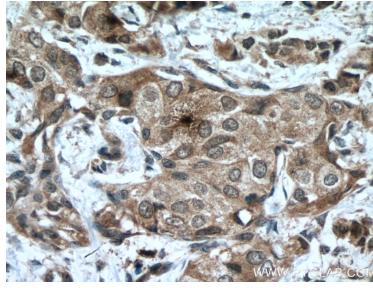
E: proteintech@ptglab.com
W: ptglab.com

This product is exclusively available under Proteintech Group brand and is not available to purchase from any other manufacturer.

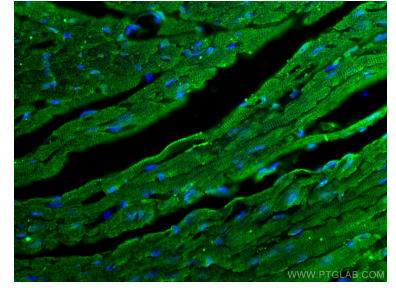
Selected Validation Data



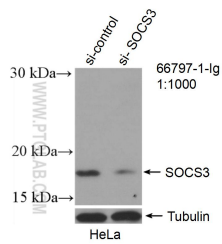
Immunohistochemical analysis of paraffin-embedded human breast cancer tissue slide using 66797-1-Ig (SOCS3 antibody) at dilution of 1:500 (under 10x lens. Heat mediated antigen retrieval with Tris-EDTA buffer (pH 9.0). This data was developed using the same antibody clone with 66797-1-PBS in a different storage buffer formulation.



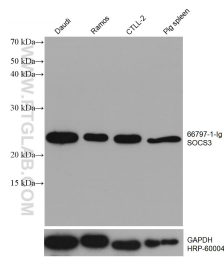
Immunohistochemical analysis of paraffin-embedded human breast cancer tissue slide using 66797-1-Ig (SOCS3 antibody) at dilution of 1:500 (under 40x lens. Heat mediated antigen retrieval with Tris-EDTA buffer (pH 9.0). This data was developed using the same antibody clone with 66797-1-PBS in a different storage buffer formulation.



Immunofluorescent analysis of (4% PFA) fixed mouse heart tissue using SOCS3 antibody (66797-1-Ig, Clone: 1G2B12) at dilution of 1:800 and CoraLite®488-Conjugated AffiniPure Goat Anti-Mouse IgG(H+L). This data was developed using the same antibody clone with 66797-1-PBS in a different storage buffer formulation.



WB result of SOCS3 antibody (66797-1-Ig; 1:1000; incubated at room temperature for 1.5 hours) with sh-Control and sh-SOCS3 transfected HeLa cells. This data was developed using the same antibody clone with 66797-1-PBS in a different storage buffer formulation.



Various lysates were subjected to SDS PAGE followed by western blot with 66797-1-Ig (SOCS3 antibody) at dilution of 1:10000 incubated at room temperature for 1.5 hours. The membrane was stripped and reblotted with HRP-conjugated GAPDH Monoclonal antibody (HRP-60004) as loading control. This data was developed using the same antibody clone with 66797-1-PBS in a different storage buffer formulation.