

For Research Use Only

COMP Monoclonal antibody, PBS Only



Catalog Number: 66793-1-PBS

Basic Information

Catalog Number: 66793-1-PBS	GenBank Accession Number: BC033676	Purification Method: Protein G purification
Size: 100ug, Concentration: 1 mg/ml by Nanodrop;	GeneID (NCBI): 1311	CloneNo.: 1D7A6
Source: Mouse	UNIPROT ID: P49747	
Isotype: IgG1	Full Name: cartilage oligomeric matrix protein	
Immunogen Catalog Number: AG4575	Calculated MW: 757 aa, 83 kDa	
	Observed MW: 100-130 kDa	

Applications

Tested Applications:
WB, IF, Indirect ELISA

Species Specificity:
Human, pig

Background Information

COMP is a secreted pentameric glycoprotein built from modular units and belongs to the thrombospondin protein family. COMP is expressed by hypertrophic chondrocytes and osteoblasts during endochondral ossification, and its expression is increased during fracture healing. COMP is involved in the assembly of collagen fibrils and other structural matrix components. COMP interacts with a number of cartilage ECM proteins, including fibronectin, collagen I, II IX, XII, and XIV, matrilins, as well as proteoglycans such as aggrecan and others. This antibody got 100-130 kDa maybe due to glycosylation.

Storage

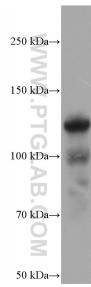
Storage:
Store at -80°C.

Storage Buffer:
PBS Only

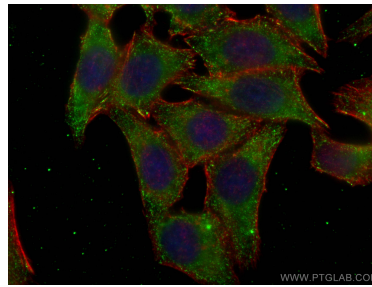
For technical support and original validation data for this product please contact:
T: 1 (888) 4PTGLAB (1-888-478-4522) (toll free in USA), or 1(312) 455-8498 (outside USA)
E: proteintech@ptglab.com
W: ptglab.com

This product is exclusively available under Proteintech Group brand and is not available to purchase from any other manufacturer.

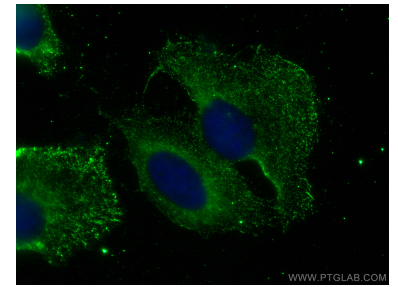
Selected Validation Data



pig cartilage tissue were subjected to SDS PAGE followed by western blot with 66793-1-Ig (COMP antibody) at dilution of 1:1000 incubated at room temperature for 1.5 hours. This data was developed using the same antibody clone with 66793-1-PBS in a different storage buffer formulation.



Immunofluorescent analysis of (-20°C Ethanol) fixed HepG2 cells using COMP antibody (66793-1-Ig, Clone: 1D7A6) at dilution of 1:400 and CoraLite®488-Conjugated AffiniPure Goat Anti-Mouse IgG(H+L), CL594-Phalloidin (red). This data was developed using the same antibody clone with 66793-1-PBS in a different storage buffer formulation.



Immunofluorescent analysis of (-20°C Methanol) fixed U2OS cells using COMP antibody (66793-1-Ig, Clone: 1D7A6) at dilution of 1:400 and CoraLite®488-Conjugated AffiniPure Goat Anti-Mouse IgG(H+L). This data was developed using the same antibody clone with 66793-1-PBS in a different storage buffer formulation.