

For Research Use Only

ROCK1 Monoclonal antibody, PBS Only



Catalog Number: 66782-1-PBS

Basic Information

Catalog Number: 66782-1-PBS	GenBank Accession Number: BC113114	Purification Method: Protein A purification
Size: 100ug, Concentration: 1 mg/ml by Nanodrop;	GeneID (NCBI): 6093	CloneNo.: 3G5E12
Source: Mouse	UNIPROT ID: Q13464	
Isotype: IgG1	Full Name: Rho-associated, coiled-coil containing protein kinase 1	
Immunogen Catalog Number: AG16317	Calculated MW: 1354 aa, 158 kDa	
	Observed MW: 150-160 kDa	

Applications

Tested Applications:
WB, Indirect ELISA

Species Specificity:
Human, Mouse, Rat

Background Information

ROCK1, also named as p160ROCK and NY-REN-35, belongs to the protein kinase superfamily and AGC Ser/Thr protein kinase family. ROCK1 phosphorylates and activates DAPK3, which then regulates myosin light chain phosphatase through phosphorylation of MYPT1 thereby regulating the assembly of the actin cytoskeleton, cell migration, invasiveness of tumor cells, smooth muscle contraction and neurite outgrowth. ROCK1 is required for centromere positioning and centromere-dependent exit from mitosis. It is necessary for apoptotic membrane blebbing. ROCK1 catalyzes the reaction: ATP + a protein = ADP + a phosphoprotein.

Storage

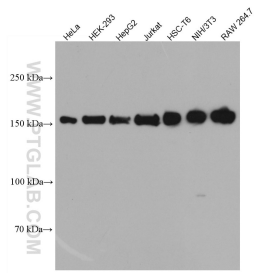
Storage:
Store at -80°C.

Storage Buffer:
PBS Only

For technical support and original validation data for this product please contact:
T: 1 (888) 4PTGLAB (1-888-478-4522) (toll free in USA), or 1(312) 455-8498 (outside USA)
E: proteintech@ptglab.com
W: ptglab.com

This product is exclusively available under Proteintech Group brand and is not available to purchase from any other manufacturer.

Selected Validation Data



Various lysates were subjected to SDS PAGE followed by western blot with 66782-1-Ig (ROCK1 antibody) at dilution of 1:2000 incubated at room temperature for 1.5 hours. This data was developed using the same antibody clone with 66782-1-PBS in a different storage buffer formulation.