

For Research Use Only

# Glycophorin A/CD235a Monoclonal antibody

Catalog Number: 66778-1-Ig **1 Publications**



## Basic Information

<b>Catalog Number:</b> 66778-1-Ig	<b>GenBank Accession Number:</b> BC005319	<b>Purification Method:</b> Protein A purification
<b>Size:</b> 150ul, Concentration: 1200 ug/ml by Nanodrop and 1000 ug/ml by Bradford method using BSA as the standard;	<b>GeneID (NCBI):</b> 2993	<b>CloneNo.:</b> 2B12G10
<b>Source:</b> Mouse	<b>UNIPROT ID:</b> P02724	<b>Recommended Dilutions:</b> WB 1:2000-1:6000 IHC 1:10000-1:40000 IF-P 1:400-1:1600
<b>Isotype:</b> IgG1	<b>Full Name:</b> glycophorin A (MNS blood group)	
<b>Immunogen Catalog Number:</b> AG8635	<b>Calculated MW:</b> 150 aa, 16 kDa	
	<b>Observed MW:</b> 36-38 kDa	

## Applications

**Tested Applications:**  
WB, IHC, IF-P, ELISA

**Cited Applications:**  
WB

**Species Specificity:**  
human

**Cited Species:**  
human

**Note-IHC: suggested antigen retrieval with TE buffer pH 9.0; (\*) Alternatively, antigen retrieval may be performed with citrate buffer pH 6.0**

**Positive Controls:**

**WB :** human blood tissue,

**IHC :** human placenta tissue, human stomach cancer tissue, human spleen tissue

**IF-P :** human placenta tissue,

## Background Information

Glycophorin A (GYPA) is the major transmembrane sialoglycoprotein in erythrocytes. It is a dimeric type I transmembrane protein carrying 15 closely clustered O-linked tetrasaccharides capped with sialic acid/N-acetylneuraminic acid (Neu5Ac). This 36 kDa protein represents the major sialoglycoprotein of the red blood cell membrane displaying about one million copies per cell. (PMID: 9490702)

## Notable Publications

Author	Pubmed ID	Journal	Application
Ryosuke Amagai	38308089	J Biochem	WB

## Storage

**Storage:**

Store at -20°C. Stable for one year after shipment.

**Storage Buffer:**

PBS with 0.02% sodium azide and 50% glycerol pH 7.3.

Aliquoting is unnecessary for -20°C storage

\*\*\* 20ul sizes contain 0.1% BSA

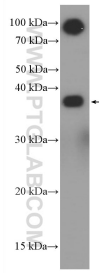
For technical support and original validation data for this product please contact:

T: 1 (888) 4PTGLAB (1-888-478-4522) (toll free in USA), or 1(312) 455-8498 (outside USA)

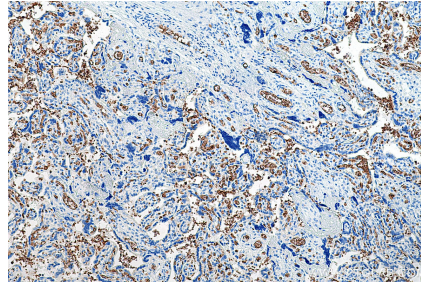
E: proteintech@ptglab.com  
W: ptglab.com

This product is exclusively available under Proteintech Group brand and is not available to purchase from any other manufacturer.

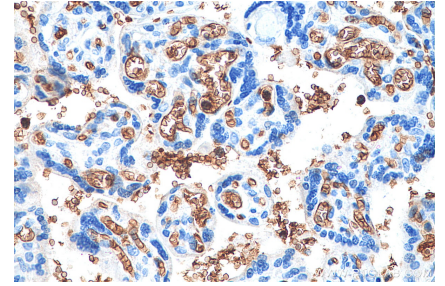
## Selected Validation Data



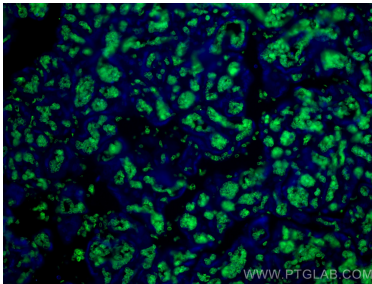
human blood were subjected to SDS PAGE followed by western blot with 66778-1-Ig (GYPA antibody) at dilution of 1:5000 incubated at room temperature for 1.5 hours.



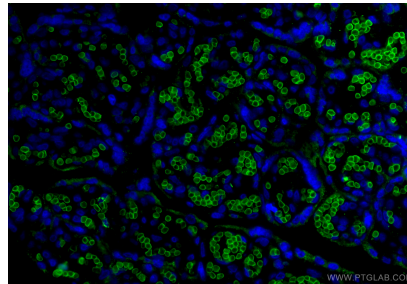
Immunohistochemical analysis of paraffin-embedded human placenta tissue slide using 66778-1-Ig (Glycophorin A antibody) at dilution of 1:20000 (under 10x lens). Heat mediated antigen retrieval with Tris-EDTA buffer (pH 9.0).



Immunohistochemical analysis of paraffin-embedded human placenta tissue slide using 66778-1-Ig (Glycophorin A antibody) at dilution of 1:20000 (under 40x lens). Heat mediated antigen retrieval with Tris-EDTA buffer (pH 9.0).



Immunofluorescent analysis of (4% PFA) fixed human placenta tissue using Glycophorin A antibody (66778-1-Ig, Clone: 2B12G10) at dilution of 1:400 and CoraLite@488-Conjugated AffiniPure Goat Anti-Mouse IgG(H+L).



Immunofluorescent analysis of (4% PFA) fixed paraffin-embedded human placenta tissue using Glycophorin A antibody (66778-1-Ig, Clone: 2B12G10) at dilution of 1:800 and CoraLite@488-Conjugated Goat Anti-Mouse IgG(H+L) (SA00013-1). Heat mediated antigen retrieval with Tris-EDTA buffer (pH 9.0).