

For Research Use Only

SSTR5 Monoclonal antibody, PBS Only



Catalog Number: 66772-1-PBS

Basic Information

Catalog Number: 66772-1-PBS	GenBank Accession Number: BC146576	Purification Method: Protein G purification
Size: 100ug , Concentration: 1 mg/ml by Nanodrop;	GeneID (NCBI): 6755	CloneNo.: 2B10D8
Source: Mouse	UNIPROT ID: P35346	
Isotype: IgG1	Full Name: somatostatin receptor 5	
Immunogen Catalog Number: AG18615	Calculated MW: 364 aa, 39 kDa	
	Observed MW: 41 kDa	

Applications

Tested Applications:
WB, IF, Indirect ELISA

Species Specificity:
Human, Mouse, Rat

Background Information

Somatostatin is a widely distributed peptide with a broad range of biological actions. Two biological forms of somatostatin exist: somatostatin-14 and -28. Somatostatin receptors (SSTR1, 2A and B, 3, 4 and 5) belong to the G protein coupled receptor family and have a wide expression pattern in both normal tissues and solid tumors (PMID: 23872332). SSTR5 has greater affinity for somatostatin-28 than somatostatin-14 (PMID: 8373420).

Storage

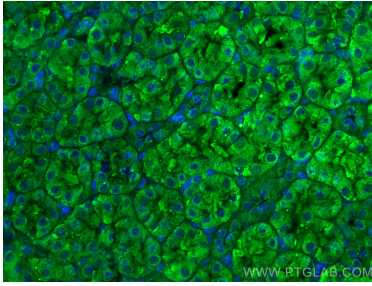
Storage:
Store at -80°C.

Storage Buffer:
PBS Only

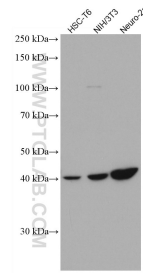
For technical support and original validation data for this product please contact:
T: 1 (888) 4PTGLAB (1-888-478-4522) (toll free in USA), or 1(312) 455-8498 (outside USA) E: proteintech@ptglab.com
W: ptglab.com

This product is exclusively available under Proteintech Group brand and is not available to purchase from any other manufacturer.

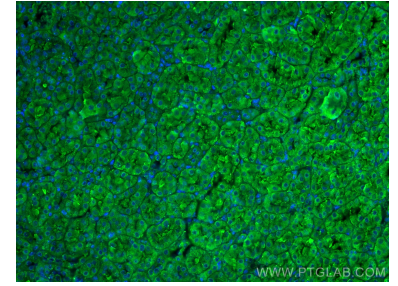
Selected Validation Data



Immunofluorescent analysis of (4% PFA) fixed mouse kidney tissue using SSTR5 antibody (66772-1-Ig, Clone: 2B10D8) at dilution of 1:400 and CoraLite®488-Conjugated AffiniPure Goat Anti-Mouse IgG(H+L). This data was developed using the same antibody clone with 66772-1-PBS in a different storage buffer formulation.



Various lysates were subjected to SDS PAGE followed by western blot with 66772-1-Ig (SSTR5 antibody) at dilution of 1:3000 incubated at room temperature for 1.5 hours. This data was developed using the same antibody clone with 66772-1-PBS in a different storage buffer formulation.



Immunofluorescent analysis of (4% PFA) fixed mouse kidney tissue using SSTR5 antibody (66772-1-Ig, Clone: 2B10D8) at dilution of 1:400 and CoraLite®488-Conjugated AffiniPure Goat Anti-Mouse IgG(H+L). This data was developed using the same antibody clone with 66772-1-PBS in a different storage buffer formulation.