

For Research Use Only

PYGL Monoclonal antibody, PBS Only

Catalog Number: 66769-1-PBS

Featured Product



Basic Information

Catalog Number:

66769-1-PBS

Size:

100ug, Concentration: 1mg/ml by Nanodrop;

Source:

Mouse

Isotype:

IgG1

Immunogen Catalog Number:

AG8550

GenBank Accession Number:

BC009895

GeneID (NCBI):

5836

UNIPROT ID:

P06737

Full Name:

phosphorylase, glycogen, liver

Calculated MW:

846 aa, 97 kDa

Observed MW:

97 kDa

Purification Method:

Protein G purification

CloneNo.:

1G12D8

Applications

Tested Applications:

WB, IF/ICC, Indirect ELISA

Species Specificity:

human, rat

Background Information

Glycogen phosphorylase L (PYGL) is one of the gene related to hypoxia metabolism and was found to be up-regulated in head and neck squamous cell carcinomas (HNSCCs) and breast cancers. Glycogen synthases (GSs) and glycogen phosphorylases (GPs) catalyze the key steps of glycogen synthesis and breakdown, while glycogen phosphorylase has three isoforms: PYGM (muscle), PYGL (liver), and PYGB (brain) (PMID: 37063425, 9529348). High PYGL expression plays an independent role in predicting the poor prognosis of glioma patients (PMID: 34177761).

Storage

Storage:

Store at -80°C.

Storage Buffer:

PBS Only

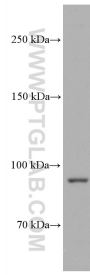
For technical support and original validation data for this product please contact:

T: 1 (888) 4PTGLAB (1-888-478-4522) (toll free in USA), or 1(312) 455-8498 (outside USA)

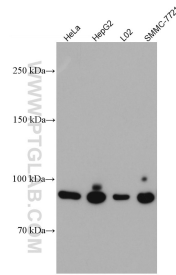
E: proteintech@ptglab.com
W: ptglab.com

This product is exclusively available under Proteintech Group brand and is not available to purchase from any other manufacturer.

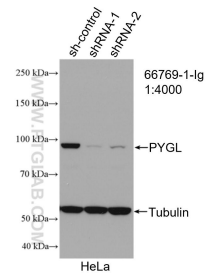
Selected Validation Data



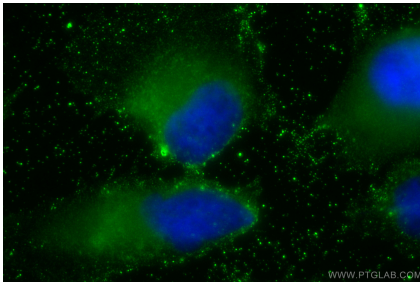
HSC-T6 cells were subjected to SDS PAGE followed by western blot with 66769-1-Ig (PYGL antibody) at dilution of 1:5000 incubated at room temperature for 1.5 hours. This data was developed using the same antibody clone with 66769-1-PBS in a different storage buffer formulation.



Various lysates were subjected to SDS PAGE followed by western blot with 66769-1-Ig (PYGL antibody) at dilution of 1:5000 incubated at room temperature for 1.5 hours. This data was developed using the same antibody clone with 66769-1-PBS in a different storage buffer formulation.



WB result of PYGL antibody (66769-1-Ig; 1:4000; incubated at room temperature for 1.5 hours) with sh-Control and sh-PYGL transfected HeLa cells. This data was developed using the same antibody clone with 66769-1-PBS in a different storage buffer formulation.



Immunofluorescent analysis of (-20°C Ethanol) fixed U-251 cells using PYGL antibody (66769-1-Ig, Clone: 1G12D8) at dilution of 1:800 and CoraLite®488-Conjugated AffiniPure Goat Anti-Mouse IgG(H+L). This data was developed using the same antibody clone with 66769-1-PBS in a different storage buffer formulation.