

For Research Use Only

# Catalase Monoclonal antibody, PBS Only



Catalog Number: 66765-1-PBS

Featured Product

## Basic Information

Catalog Number:

66765-1-PBS

Size:

100ug, Concentration: 1 mg/ml by Nanodrop;

Source:

Mouse

Isotype:

IgG1

Immunogen Catalog Number:

AG16916

GenBank Accession Number:

BC112219

GeneID (NCBI):

847

UNIPROT ID:

P04040

Full Name:

catalase

Calculated MW:

60 kDa

Observed MW:

60 kDa

Purification Method:

Protein G purification

CloneNo.:

1F8D7

## Applications

Tested Applications:

WB, IF, IHC, Indirect ELISA

Species Specificity:

Human, Mouse, Rat, Pig

## Background Information

Catalase belongs to the catalase family. CAT occurs in almost all aerobically respiring organisms and serves to protect cells from the toxic effects of hydrogen peroxide. CAT promotes the growth of cells including T-cells, B-cells, myeloid leukemia cells, melanoma cells, mastocytoma cells, and normal and transformed fibroblast cells. CAT catalyzes the reaction:  $2 \text{H}_2\text{O}_2 = \text{O}_2 + 2 \text{H}_2\text{O}$ . Defects in CAT are the cause of acatalasia (ACATLAS) which is also known as acatalasemia.

## Storage

Storage:

Store at  $-80^\circ\text{C}$ .

Storage Buffer:

PBS Only

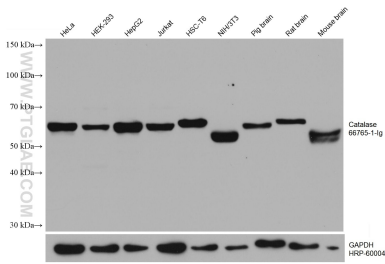
For technical support and original validation data for this product please contact:

T: 1 (888) 4PTGLAB (1-888-478-4522) (toll free in USA), or 1(312) 455-8498 (outside USA)

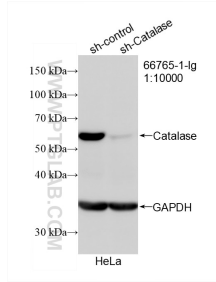
E: [proteintech@ptglab.com](mailto:proteintech@ptglab.com)  
W: [ptglab.com](http://ptglab.com)

This product is exclusively available under Proteintech Group brand and is not available to purchase from any other manufacturer.

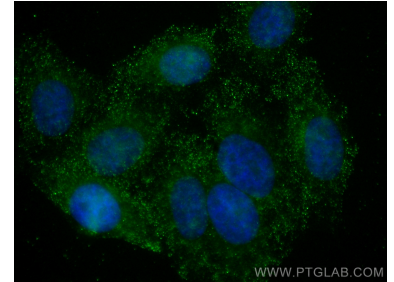
## Selected Validation Data



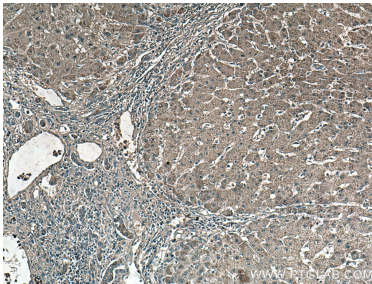
Various lysates were subjected to SDS PAGE followed by western blot with 66765-1-Ig (Catalase antibody) at dilution of 1:10000 incubated at room temperature for 1.5 hours. The membrane was stripped and reblotted with HRP-conjugated GAPDH Monoclonal antibody (HRP-60004) as loading control. This data was developed using the same antibody clone with 66765-1-PBS in a different storage buffer formulation.



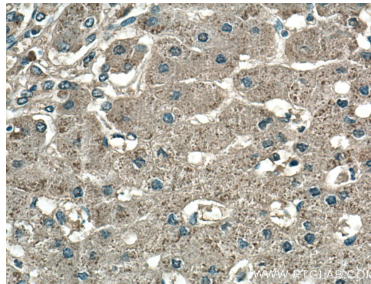
WB result of Catalase antibody (66765-1-Ig; 1:10000; incubated at room temperature for 1.5 hours) with sh-Control and sh-Catalase transfected HeLa cells. This data was developed using the same antibody clone with 66765-1-PBS in a different storage buffer formulation.



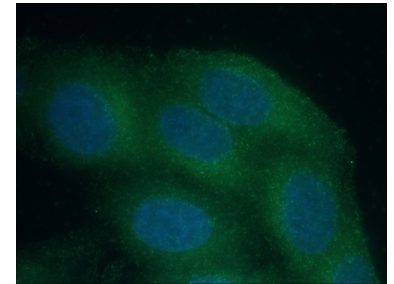
Immunofluorescent analysis of (4% PFA) fixed HepG2 cells using Catalase antibody (66765-1-Ig, Clone: 1F8D7) at dilution of 1:400 and CoraLite®488-Conjugated AffiniPure Goat Anti-Mouse IgG(H+L). This data was developed using the same antibody clone with 66765-1-PBS in a different storage buffer formulation.



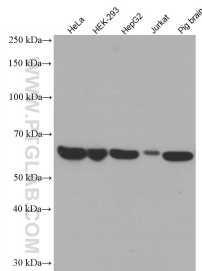
Immunohistochemical analysis of paraffin-embedded human hepatocirrhosis tissue slide using 66765-1-Ig (Catalase antibody) at dilution of 1:500 (under 10x lens). This data was developed using the same antibody clone with 66765-1-PBS in a different storage buffer formulation.



Immunohistochemical analysis of paraffin-embedded human hepatocirrhosis tissue slide using 66765-1-Ig (Catalase antibody) at dilution of 1:500 (under 40x lens). This data was developed using the same antibody clone with 66765-1-PBS in a different storage buffer formulation.



Immunofluorescent analysis of (-20°C Ethanol) fixed HepG2 cells using 66765-1-Ig (Catalase antibody) at dilution of 1:50 and Alexa Fluor 488-Conjugated AffiniPure Goat Anti-Mouse IgG(H+L). This data was developed using the same antibody clone with 66765-1-PBS in a different storage buffer formulation.



Various lysates were subjected to SDS PAGE followed by western blot with 66765-1-Ig (Catalase antibody) at dilution of 1:5000 incubated at room temperature for 1.5 hours. This data was developed using the same antibody clone with 66765-1-PBS in a different storage buffer formulation.