

For Research Use Only

BACH1 Monoclonal antibody, PBS Only (Capture/Detector)

Catalog Number: 66762-2-PBS



Basic Information

Catalog Number:

66762-2-PBS

Size:

100ug, Concentration: 1 mg/ml by
Nanodrop;

Source:

Mouse

Isotype:

IgG1

Immunogen Catalog Number:

AG6011

GenBank Accession Number:

BC063307

GeneID (NCBI):

571

ENSEMBL Gene ID:

ENSG00000156273

UNIPROT ID:

O14867

Full Name:

BTB and CNC homology 1, basic
leucine zipper transcription factor 1

Calculated MW:

82 kDa

Purification Method:

Protein G purification

CloneNo.:

4E4A5

Applications

Tested Applications:

Cytometric bead array, Sandwich ELISA, Indirect ELISA,
Sample test

Species Specificity:

human

Product Information

66762-2-PBS targets BACH1 as part of a matched antibody pair:

MP50384-1: 66762-1-PBS capture and 66762-2-PBS detection (validated in Cytometric bead array)

MP80007-1: 66762-2-PBS capture and 82842-2-PBS detection (validated in Cytometric bead array, Sandwich ELISA)

MP80007-2: 66762-2-PBS capture and 82842-1-PBS detection (validated in Cytometric bead array)

Unconjugated mouse monoclonal antibody pair in PBS only (BSA and azide free) storage buffer at a concentration of 1 mg/mL, ready for conjugation.

This conjugation ready format makes antibodies ideal for use in many applications including: ELISAs, multiplex assays requiring matched pairs, mass cytometry, and multiplex imaging applications. Antibody use should be optimized by the end user for each application and assay.

Storage

Storage:

Store at -80°C.

Storage Buffer:

PBS Only

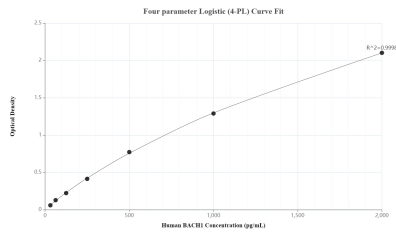
For technical support and original validation data for this product please contact:

T: 1 (888) 4PTGLAB (1-888-478-4522) (toll free
in USA), or 1(312) 455-8498 (outside USA)

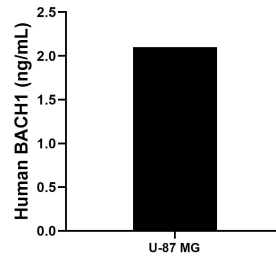
E: proteintech@ptglab.com
W: ptglab.com

This product is exclusively available under Proteintech Group brand and is not available to purchase from any other manufacturer.

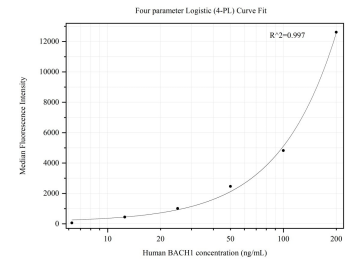
Selected Validation Data



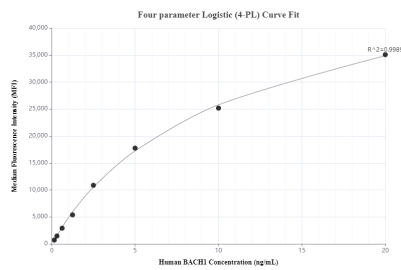
Sandwich ELISA standard curve of MP80007-1, Human BACH1 Hybrid Matched Antibody Pair - PBS only. 66762-2-PBS was coated to a plate as the capture antibody and incubated with serial dilutions of standard Ag6011. 82842-2-PBS was HRP conjugated as the detection antibody. Range: 31.25-2000 pg/mL



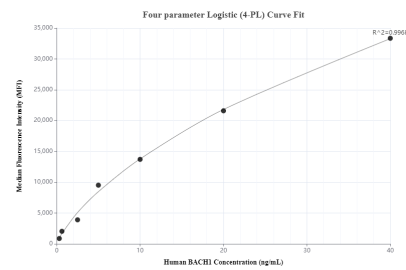
The mean BACH1 concentration was determined to be 2.1 ng/mL in U-87 MG cell extract based on a 2.0 mg/mL extract load.



Cytometric bead array standard curve of MP50384-1, BACH1 Monoclonal Matched Antibody Pair, PBS Only. Capture antibody: 66762-1-PBS. Detection antibody: 66762-2-PBS. Standard: Ag6011. Range: 6.25-200 ng/mL



Cytometric bead array standard curve of MP80007-1, BACH1 Hybrid Matched Antibody Pair, PBS Only. Capture antibody: 66762-2-PBS. Detection antibody: 82842-2-PBS. Standard: Ag6011. Range: 0.156-20 ng/mL



Cytometric bead array standard curve of MP80007-2, BACH1 Hybrid Matched Antibody Pair, PBS Only. Capture antibody: 66762-2-PBS. Detection antibody: 82842-1-PBS. Standard: Ag6011. Range: 0.313-40 ng/mL