

For Research Use Only

BACH1 Monoclonal antibody, PBS Only (Capture)

Catalog Number: 66762-1-PBS

Featured Product



Basic Information

Catalog Number: 66762-1-PBS	GenBank Accession Number: BC063307	Purification Method: Protein A purification
Size: 100ug, Concentration: 1mg/ml by Nanodrop;	GeneID (NCBI): 571	CloneNo.: 2D12A4
Source: Mouse	ENSEMBL Gene ID: ENSG00000156273	
Isotype: IgG1	UNIPROT ID: O14867	
Immunogen Catalog Number: AG6011	Full Name: BTB and CNC homology 1, basic leucine zipper transcription factor 1	
	Calculated MW: 82 kDa	
	Observed MW: 100-110 kDa	

Applications

Tested Applications:
WB, IHC, Cytometric bead array, Indirect ELISA

Species Specificity:
human, mouse, rat, pig, rabbit

Product Information

66762-1-PBS targets BACH1 as part of a matched antibody pair:

MP50384-1: 66762-1-PBS capture and 66762-2-PBS detection (validated in Cytometric bead array)

MP50384-2: 66762-1-PBS capture and 66762-3-PBS detection (validated in Cytometric bead array)

MP80007-3: 66762-1-PBS capture and 82842-2-PBS detection (validated in Cytometric bead array)

Unconjugated mouse monoclonal antibody pair in PBS only (BSA and azide free) storage buffer at a concentration of 1 mg/mL, ready for conjugation.

This conjugation ready format makes antibodies ideal for use in many applications including: ELISAs, multiplex assays requiring matched pairs, mass cytometry, and multiplex imaging applications. Antibody use should be optimized by the end user for each application and assay.

Background Information

BTB and CNC homology 1, basic leucine zipper transcription factor 1 (BACH1) is a heme-regulated transcriptional regulator that acts as a repressor or activator and a member of the AP-1 superfamily. MafK belongs to the small Maf family that can function as transcriptional activators or repressors depending on the proteins with which they form heterodimers. BACH1 has crucial roles in both stress responses and transformation by H-RasV12. The molecular weight of expected mobility Bach1 is 100-110 kDa.

Storage

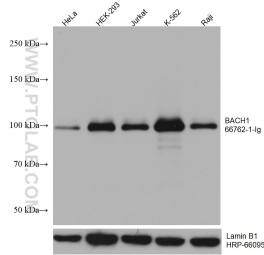
Storage:
Store at -80°C.

Storage Buffer:
PBS Only

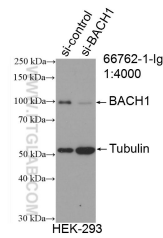
For technical support and original validation data for this product please contact:
T: 1 (888) 4PTGLAB (1-888-478-4522) (toll free in USA), or 1(312) 455-8498 (outside USA)
E: proteintech@ptglab.com
W: ptglab.com

This product is exclusively available under Proteintech Group brand and is not available to purchase from any other manufacturer.

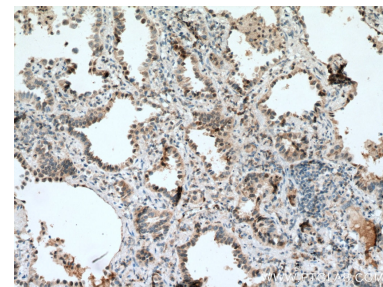
Selected Validation Data



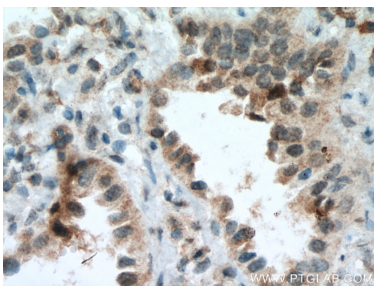
Various lysates were subjected to SDS PAGE followed by western blot with 66762-1-Ig (BACH1 antibody) at dilution of 1:3000 incubated at room temperature for 1.5 hours. The membrane was stripped and reblotted with HRP-conjugated Lamin B1 Monoclonal antibody (HRP-66095) as loading control. This data was developed using the same antibody clone with 66762-1-PBS in a different storage buffer formulation.



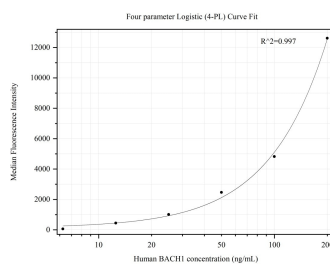
WB result of BACH1 antibody (66762-1-Ig; 1:4000; incubated at room temperature for 1.5 hours) with sh-Control and sh-BACH1 transfected HEK-293 cells. This data was developed using the same antibody clone with 66762-1-PBS in a different storage buffer formulation.



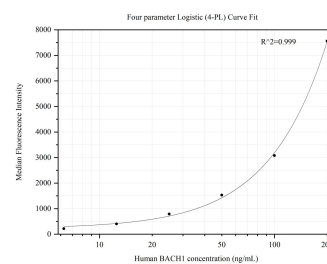
Immunohistochemical analysis of paraffin-embedded human lung cancer tissue slide using 66762-1-Ig (BACH1 antibody) at dilution of 1:1000 (under 10x lens). Heat mediated antigen retrieval with Tris-EDTA buffer (pH 9.0). This data was developed using the same antibody clone with 66762-1-PBS in a different storage buffer formulation.



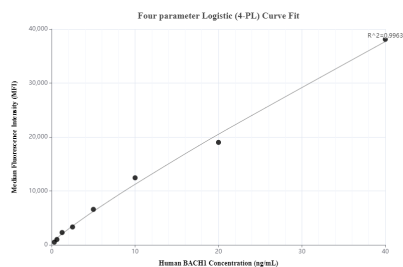
Immunohistochemical analysis of paraffin-embedded human lung cancer tissue slide using 66762-1-Ig (BACH1 antibody) at dilution of 1:100 (under 40x lens). Heat mediated antigen retrieval with Tris-EDTA buffer (pH 9.0). This data was developed using the same antibody clone with 66762-1-PBS in a different storage buffer formulation.



Cytometric bead array standard curve of MP50384-1, BACH1 Monoclonal Matched Antibody Pair, PBS Only. Capture antibody: 66762-1-PBS. Detection antibody: 66762-2-PBS. Standard: Ag6011. Range: 6.25-200 ng/mL.



Cytometric bead array standard curve of MP50384-2, BACH1 Monoclonal Matched Antibody Pair, PBS Only. Capture antibody: 66762-1-PBS. Detection antibody: 66762-3-PBS. Standard: Ag6011. Range: 6.25-200 ng/mL.



Cytometric bead array standard curve of MP80007-3, BACH1 Hybrid Matched Antibody Pair, PBS Only. Capture antibody: 66762-1-PBS. Detection antibody: 82842-2-PBS. Standard: Ag6011. Range: 0.313-40 ng/mL.