

For Research Use Only

Collagen Type I Monoclonal antibody, PBS Only



Catalog Number: 66761-1-PBS

Basic Information

Catalog Number: 66761-1-PBS	GenBank Accession Number: BC054498	Purification Method: Protein G purification
Size: 100ug, Concentration: 1 mg/ml by Nanodrop;	GeneID (NCBI): 1278	CloneNo.: 3D5E8
Source: Mouse	UNIPROT ID: P08123	
Isotype: IgG1	Full Name: collagen, type I, alpha 2	
Immunogen Catalog Number: AG6281	Calculated MW: 1366 aa, 130 kDa	
	Observed MW: 140 kDa, 70-80 kDa	

Applications

Tested Applications:
WB, Indirect ELISA

Species Specificity:
Human, pig, mouse, rat

Background Information

Type I collagen, the major structural component of connective tissues such as skin, tendon and bone, is the most abundant and widely expressed collagen in humans (PMID: 7620364; 8645190; 9016532). Type I collagen is a heterotrimer comprising one alpha 2(I) and two alpha 1(I) chains which are encoded by the unlinked loci COL1A2 and COL1A1 respectively. Type I collagen has a molecular mass of about 250-300 kDa, while the alpha 2(I) chain has a molecular weight of about 100-140 kDa. Mutations in COL1A2 gene are associated with osteogenesis imperfecta, Ehlers-Danlos syndrome, idiopathic osteoporosis, and atypical Marfan syndrome.

Storage

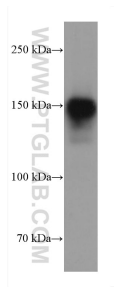
Storage:
Store at -80°C.

Storage Buffer:
PBS Only

For technical support and original validation data for this product please contact:
T: 1 (888) 4PTGLAB (1-888-478-4522) (toll free in USA), or 1(312) 455-8498 (outside USA)
E: proteintech@ptglab.com
W: ptglab.com

This product is exclusively available under Proteintech Group brand and is not available to purchase from any other manufacturer.

Selected Validation Data



rat skin tissue were subjected to SDS PAGE followed by western blot with 66761-1-Ig (Collagen Type I antibody) at dilution of 1:5000 incubated at room temperature for 1.5 hours. This data was developed using the same antibody clone with 66761-1-PBS in a different storage buffer formulation.