

For Research Use Only

YTHDF1 Monoclonal antibody, PBS Only



Catalog Number: 66745-1-PBS

Featured Product

Basic Information

Catalog Number:

66745-1-PBS

Size:

100ug, Concentration: 1 mg/ml by Nanodrop;

Source:

Mouse

Isotype:

IgG1

Immunogen Catalog Number:

AG11633

GenBank Accession Number:

BC050284

GeneID (NCBI):

54915

UNIPROT ID:

Q9BYJ9

Full Name:

YTH domain family, member 1

Calculated MW:

559 aa, 61 kDa

Observed MW:

60 kDa

Purification Method:

Protein G purification

CloneNo.:

3A2H12

Applications

Tested Applications:

WB, IP, IHC, Indirect ELISA

Species Specificity:

Human, rat, mouse

Background Information

YTHDF1, also named as YTH domain-containing family protein 1 or C20orf21, is a 559 amino acid protein, which localizes in the cytoplasm. YTHDF1 specifically recognizes and binds N6-methyladenosine (m6A)-containing mRNAs, and promotes mRNA translation efficiency. M6A is a modification present at internal sites of mRNAs and some non-coding RNAs and plays a role in the efficiency of mRNA splicing, processing and stability. YTHDF1 acts as a regulator of mRNA translation efficiency: promotes ribosome loading to m6A-containing mRNAs and interacts with translation initiation factors eIF3 (EIF3A or EIF3B) to facilitate translation initiation. YTHDF1 exists two isoform and calculated molecular weight of isoforms are 61 kDa and 21 kDa.

Storage

Storage:

Store at -80°C.

Storage Buffer:

PBS Only

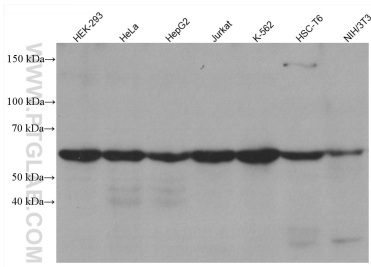
For technical support and original validation data for this product please contact:

T: 1 (888) 4PTGLAB (1-888-478-4522) (toll free in USA), or 1(312) 455-8498 (outside USA)

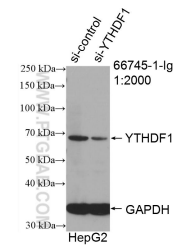
E: proteintech@ptglab.com
W: ptglab.com

This product is exclusively available under Proteintech Group brand and is not available to purchase from any other manufacturer.

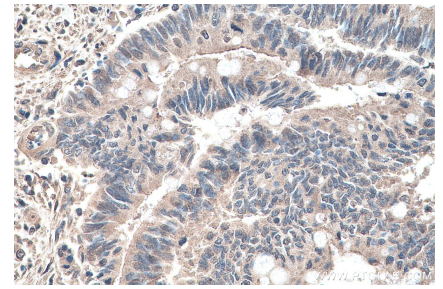
Selected Validation Data



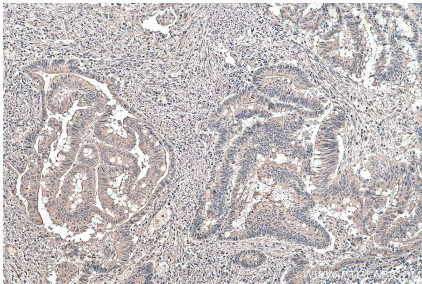
Various lysates were subjected to SDS PAGE followed by western blot with 66745-1-Ig (YTHDF1 antibody) at dilution of 1:2000 incubated at room temperature for 1.5 hours. This data was developed using the same antibody clone with 66745-1-PBS in a different storage buffer formulation.



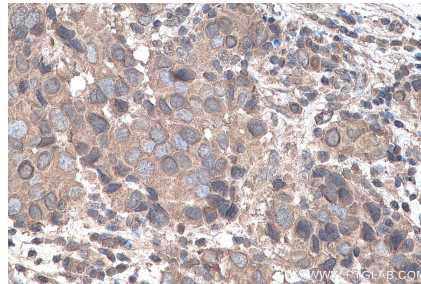
WB result of YTHDF1 antibody (66745-1-Ig; 1:2000; incubated at room temperature for 1.5 hours) with sh-Control and sh-YTHDF1 transfected HepG2 cells. This data was developed using the same antibody clone with 66745-1-PBS in a different storage buffer formulation.



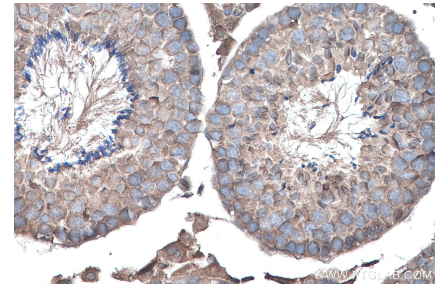
Immunohistochemical analysis of paraffin-embedded human colon cancer tissue slide using 66745-1-Ig (YTHDF1 antibody) at dilution of 1:2000 (under 40x lens). Heat mediated antigen retrieval with Tris-EDTA buffer (pH 9.0). This data was developed using the same antibody clone with 66745-1-PBS in a different storage buffer formulation.



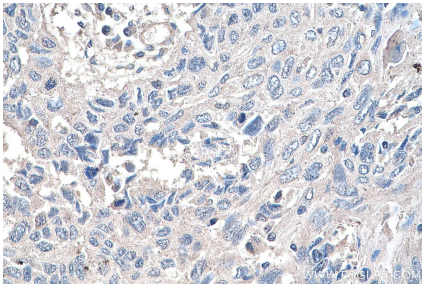
Immunohistochemical analysis of paraffin-embedded human colon cancer tissue slide using 66745-1-Ig (YTHDF1 antibody) at dilution of 1:2000 (under 10x lens). Heat mediated antigen retrieval with Tris-EDTA buffer (pH 9.0). This data was developed using the same antibody clone with 66745-1-PBS in a different storage buffer formulation.



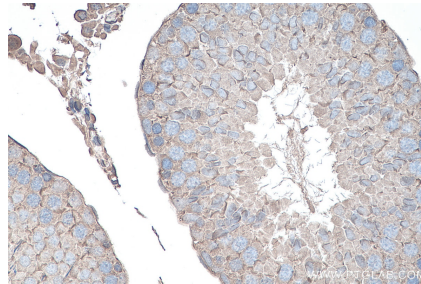
Immunohistochemical analysis of paraffin-embedded human breast cancer tissue slide using 66745-1-Ig (YTHDF1 antibody) at dilution of 1:2000 (under 40x lens). Heat mediated antigen retrieval with Tris-EDTA buffer (pH 9.0). This data was developed using the same antibody clone with 66745-1-PBS in a different storage buffer formulation.



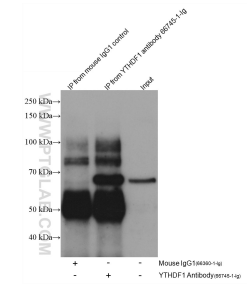
Immunohistochemical analysis of paraffin-embedded mouse testis tissue slide using 66745-1-Ig (YTHDF1 antibody) at dilution of 1:2000 (under 40x lens). Heat mediated antigen retrieval with Tris-EDTA buffer (pH 9.0). This data was developed using the same antibody clone with 66745-1-PBS in a different storage buffer formulation.



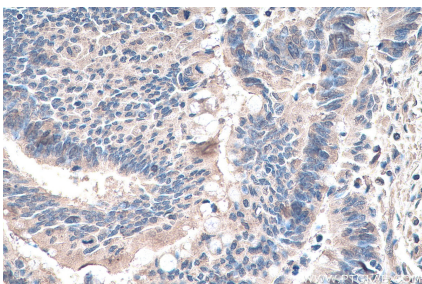
Immunohistochemical analysis of paraffin-embedded human lung cancer tissue slide using 66745-1-Ig (YTHDF1 antibody) at dilution of 1:2000 (under 40x lens). Heat mediated antigen retrieval with Tris-EDTA buffer (pH 9.0). This data was developed using the same antibody clone with 66745-1-PBS in a different storage buffer formulation.



Immunohistochemical analysis of paraffin-embedded rat testis tissue slide using 66745-1-Ig (YTHDF1 antibody) at dilution of 1:2000 (under 40x lens). Heat mediated antigen retrieval with Tris-EDTA buffer (pH 9.0). This data was developed using the same antibody clone with 66745-1-PBS in a different storage buffer formulation.



IP result of anti-YTHDF1 (IP:66745-1-Ig, 4ug; Detection:66745-1-Ig 1:2000) with Jurkat cells lysate 2000 ug. This data was developed using the same antibody clone with 66745-1-PBS in a different storage buffer formulation.



Immunohistochemical analysis of paraffin-embedded human colon cancer tissue slide using 66745-1-Ig (YTHDF 1 antibody) at dilution of 1:4000 (under 40x lens). Heat mediated antigen retrieval with Tris-EDTA buffer (pH 9.0). This data was developed using the same antibody clone with 66745-1-PBS in a different storage buffer formulation.