

For Research Use Only

# ATG5 Monoclonal antibody, PBS Only



Catalog Number: 66744-1-PBS

Featured Product

## Basic Information

**Catalog Number:**

66744-1-PBS

**Size:**

100ug, Concentration: 1 mg/ml by Nanodrop;

**Source:**

Mouse

**Isotype:**

IgG2a

**Immunogen Catalog Number:**

AG16685

**GenBank Accession Number:**

BC002699

**GeneID (NCBI):**

9474

**UNIPROT ID:**

Q9H1Y0

**Full Name:**

ATG5 autophagy related 5 homolog (S. cerevisiae)

**Calculated MW:**

32 kDa

**Observed MW:**

50-55 and 40-45 kDa

**Purification Method:**

Protein A purification

**CloneNo.:**

2D3B8

## Applications

**Tested Applications:**

WB, FC, IHC, Indirect ELISA

**Species Specificity:**

human, mouse, rat

## Background Information

ATG5, also named as APG5L and ASP, belongs to the ATG5 family. It is required for autophagy. It plays an important role in the apoptotic process, possibly within the modified cytoskeleton. Its expression is a relatively late event in the apoptotic process, occurring downstream of caspase activity. Autophagy is a catabolic process for the autophagosomic-lysosomal degradation of bulk cytoplasmic contents. Formation of the autophagosome involves a ubiquitin-like conjugation system in which ATG12 is covalently bound to ATG5 and targeted to autophagosome vesicles. It mediates autophagosome-independent host protection. 66744-1-Ig antibody can recognize the ATG5-ATG12 complex (50-55 kDa) which can be truncated and generate a 40-45 kDa band. (PMID: 19783656, 25032862)

## Storage

**Storage:**

Store at -80°C.

**Storage Buffer:**

PBS Only

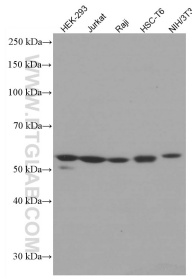
For technical support and original validation data for this product please contact:

T: 1 (888) 4PTGLAB (1-888-478-4522) (toll free in USA), or 1(312) 455-8498 (outside USA)

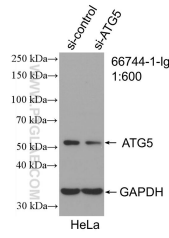
E: [proteintech@ptglab.com](mailto:proteintech@ptglab.com)  
W: [ptglab.com](http://ptglab.com)

This product is exclusively available under Proteintech Group brand and is not available to purchase from any other manufacturer.

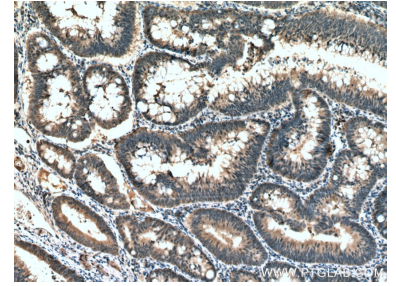
## Selected Validation Data



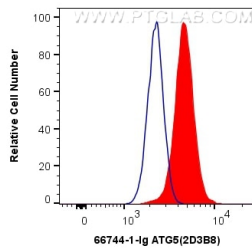
Various lysates were subjected to SDS PAGE followed by western blot with 66744-1-Ig (ATG5 antibody) at dilution of 1:3000 incubated at room temperature for 1.5 hours. This data was developed using the same antibody clone with 66744-1-PBS in a different storage buffer formulation.



WB result of ATG5 antibody (66744-1-Ig: 1:600; incubated at room temperature for 1.5 hours) with sh-Control and sh-ATG5 transfected HeLa cells. This data was developed using the same antibody clone with 66744-1-PBS in a different storage buffer formulation.



Immunohistochemical analysis of paraffin-embedded human colon cancer tissue slide using 66744-1-Ig (ATG5 antibody) at dilution of 1:300 (under 10x lens). Heat mediated antigen retrieval with Tris-EDTA buffer (pH 9.0). This data was developed using the same antibody clone with 66744-1-PBS in a different storage buffer formulation.



1X10<sup>6</sup> MCF-7 cells were intracellularly stained with 0.4 ug Anti-Human ATG5 (66744-1-Ig, Clone:2D3B8) and CoraLite®488-Conjugated AffiniPure Goat Anti-Mouse IgG(H+L) at dilution 1:1000 (red), or 0.4 ug Mouse IgG2a Isotype Control (66360-2-Ig, Clone: K11A1B2A2) (blue). Cells were fixed with 4% PFA and permeabilized with Flow Cytometry Perm Buffer (PF00011-C). This data was developed using the same antibody clone with 66744-1-PBS in a different storage buffer